

2005




LINCOLN
L S



LS V8 Ultimate with American walnut burl wood accents and available Lincoln Soundmark™ THX® Certified Car Audio/Navigation System.





Certified to Perform.

With its athletic stance, Formula One-inspired underpinnings and choice of spirited V-6 or high-performance V-8 engines, Lincoln LS ensures that magic is just around the bend. Every bend. Its 3.9L 32-valve V-8 harnesses 280 horses, while the V-6 lays down 232 hp. For the control of a manual transmission with the convenience of an automatic, the 5-speed SelectShift Automatic™ transmission (LS V-8 Sport and Ultimate) is always at hand to allow the driver to manually command gear changes for a more exhilarating drive.

With its rear-wheel-drive configuration and 4-wheel independent suspension, LS possesses significant road-holding prowess. A standard Anti-lock Brake System (ABS) provides greater steering control and helps prevent wheel lockup, while All-Speed Traction Control reduces wheel spin and helps you maintain steering control on loose or slippery surfaces. For the ultimate in controlled traction, the available AdvanceTrac® Electronic Stability Enhancement System (standard on Ultimate) maximizes handling to help you stay on your intended course.

As if its performance credentials aren't enough, Lincoln LS offers the first cinema-quality sound system created exclusively for an automobile. Just like THX® technology at the movies, the available Lincoln Soundmark™ THX-Certified Car Audio System is fine-tuned with 12 speakers, 180 watts of power, a 6-disc in-dash CD changer and 3 listening modes. This sonic treasure is packaged with a Navigation System that understands 174 voice commands.

With Lincoln LS, a world of personal satisfaction awaits you with every drive. For starters, standard Dual-zone Electronic Automatic Temperature Control automatically maintains individual temperatures for the front passengers. Controls for the available heated *and* cooled front seats take comfort to a whole new level. To indulge rear passengers, heated rear seats are also available.

Remember that even advanced technology cannot overcome the laws of physics. It's always possible to lose control of a vehicle due to inappropriate driver input for the conditions.

LS V-8 Sport with LSE Appearance Package in Vivid Red Metallic.



1 Always wear your safety belt and secure children in the rear seat. 2 Homelink is a registered trademark of Johnson Controls. 3 Dealer-installed option; requires Navigation System.

KEY LS STANDARD EQUIPMENT

V-6 LUXURY

Performance

All-Speed Traction Control

Brakes - power, vented 4-wheel disc anti-lock

Cooling System - fail-safe

Engine - 3.0L DOHC 24-valve aluminum V-6 with variable cam timing and Electronic Throttle Control

Transmission - 5-speed electronic automatic with overdrive

Interior

Audio - premium Dual-Media AM/FM stereo/single-CD/cassette player with 80 watts and 4 speakers

Interior Accents - black-lacquer, with leather-wrapped steering wheel and shift knob

Seats - leather-trimmed, power 8-way driver and 6-way front-passenger with manual lumbar; rear 60/40 split-folding

Exterior

Bumpers - color-keyed with chrome inserts

Grille - chrome surround with platinum verticals

Wheels - 16" 7-spoke painted aluminum

Safety/Security

Airbags¹ - dual-stage for driver and front passenger

Airbags¹ - side-impact with head/chest protection for driver and front passenger

Personal Safety SystemTM - including front crash severity sensor, sensors to detect front safety belt usage and driver's-seat position, front safety belt pretensioners and energy-management retractors

SecuriLock[®] Passive Anti-Theft System

SmartLockTM Anti-Lockout System

V-6 APPEARANCE PACKAGE

In addition to or in place of equipment on V-6 Luxury:

Audio - Lincoln SoundmarkTM Audiophile AM/FM stereo with 6-disc in-dash CD changer, 180 watts and 12 speakers including a 90-watt subwoofer, SIRIUS Satellite Radio capable

Bumpers - color-keyed with color-keyed inserts

Grille - monochrome surround

HomeLink[®] Universal Transceiver² - universal remote for up to 3 items

Memory - driver's seat and sideview mirrors, tilt/telescoping steering wheel

Wheels - 16" 7-spoke polished-aluminum

V-6 PREMIUM

In addition to or in place of equipment on V-6 Appearance Package:

Bumpers - color-keyed with chrome inserts

Grille - chrome surround

Interior Accents - American walnut burl wood on leather-wrapped steering wheel, shift knob, instrument panel and door-trim panels

Wheels - 16" 11-spoke painted aluminum

V-8 SPORT

In addition to or in place of equipment on V-6 Premium:

Bumpers - color-keyed with color-keyed inserts

Engine - 3.9L DOHC 32-valve aluminum V-8 with variable cam timing and Electronic Throttle Control

Interior Accents - aluminum, including leather-wrapped steering wheel and shift knob

Tires - P235/50R17 95V all-season

Transmission - 5-speed SelectShift AutomaticTM with manual gear-selection mode

Wheels - 17" 7-spoke machined-aluminum

V-8 ULTIMATE

In addition to or in place of equipment on V-8 Sport:

AdvanceTrac[®] - Electronic Stability Enhancement System

Heated and Cooled Seats - perforated-leather-trimmed driver and front-passenger

Interior Accents - American walnut burl wood on leather-wrapped steering wheel, shift knob, instrument panel and door-trim panels

Power Moonroof

Wheels - 17" 8-spoke chromed-aluminum

AVAILABLE EQUIPMENT

V-6 LUXURY

V-6 APPEARANCE PACKAGE

V-6 PREMIUM

V-8 SPORT

V-8 ULTIMATE

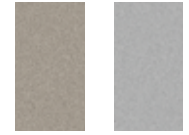
○ ○ ○ ○ S	AdvanceTrac - Electronic Stability Enhancement System
○ ○ ○ ○	Audio/Navigation - Lincoln Soundmark THX [®] -Certified Car Audio System, including touch-screen DVD/Satellite Navigation System and 6-disc in-dash CD changer, SIRIUS Satellite Radio capable
○ ○ ○ ○ ○	Extended Rear Park Assist
○ ○ ○ ○	Headlamps - High-Intensity Discharge (HID)
○ ○ ○ S	Heated and Cooled Seats - perforated-leather-trimmed driver and front-passenger
○ ○ ○ ○	Heated Rear Seats - requires heated and cooled front seats
S ○ S	Interior Accents - American walnut burl wood on instrument panel and door-trim panels
○	LSE Appearance Package - includes unique 17" 7-spoke chromed-aluminum wheels, modified front and rear fascias and side rocker panels, unique fog lamps, color-keyed grille surround with chromed vertical bars, color-keyed license-plate surround, rear decklid spoiler, all-red taillamps, LSE badge, LSE floor mats and unique wood interior appliques
○	Pedals - power-adjustable
○ ○ ○ ○	Pedals - power-adjustable with memory
○ ○ ○ S	Power Moonroof
○ ○ ○ ○ ○	Side-Curtain Airbags
○ ○ ○ ○	SIRIUS Satellite Radio service ³
○	Wheels - 16" 11-spoke chromed-aluminum

S=Standard ○=Optional

COLORS



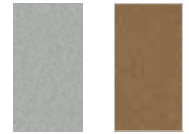
Black Vivid Red Metallic*



Light French Silk Metallic Silver Birch Metallic



Norseia Blue Metallic Light Tundra Metallic



Cashmere Tri-Coat* Bronze Metallic



Charcoal Beige Metallic Ceramic White Pearlescent Tri-Coat*

*Additional cost.

Comparisons based on 2004 competitive models, publicly available information and Ford certification data at time of printing. Following the publication of this brochure, certain changes in standard equipment, options, prices and the like, or product delays may have occurred which would not be included in these pages. Your Lincoln Mercury Dealer is your best source for up-to-date information. Lincoln Mercury reserves the right to change product specifications at any time without incurring obligations. Options shown or described in this brochure are available at extra cost and may be offered only in combination with other options or subject to additional ordering requirements or limitations.