

Shooting stars. Awe-inspiring.

Kind of like a truck with a powerful 4.0L engine,
a 29-mpg* 2.3L engine and way-beyond-sonic
sound.

'07 Ranger FX4 Level II

Hiller Ford Inc.

6455 South 108 Street

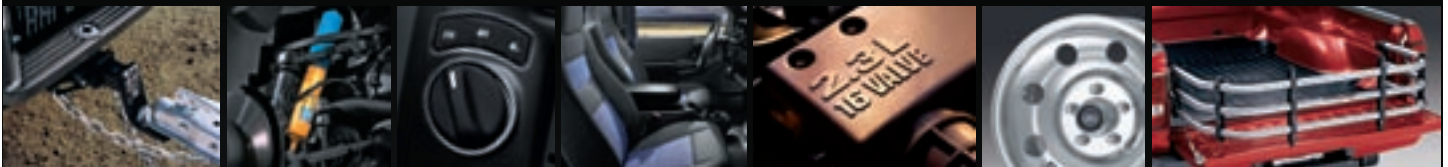
Franklin, WI 53132

414-425-1000

www.hillerford.com



*EPA estimated 24 city/29 highway mpg with 2.3L DOHC I4 and manual transmission.



With up to 6,000 lbs. of pull,
a surefooted stance
and enough power to
tackle your toughest workload,
it's a compact pickup -
that doesn't act like one.

'07 Ranger SPORT



Ranger isn't about to stop acting like the biggest truck around. The 4x2 Regular Cab can tow up to 6,000 lbs.* with the available 4.0L SOHC V6 engine. And with 4x4 engagement on the FX4 models, traction is optimized for almost any terrain you need to conquer. We're talking standard premium shocks, two front hooks, two skid plates, all-terrain tires and more. Hello mountain.

*When properly equipped



Rock and roll.
A hot set of wheels.
They're just so good together.

'07 Ranger SPORT

fordvehicles.com

Kick back in this truck's comfortable cab. And crank it up. Ranger offers the optional Wheels & Tunes Package - with a 510-watt Audiophile Sound System, AM/FM stereo/in-dash 6-disc CD player with MP3 capability, multichannel amplifier, 6x8" coaxial speakers, 10" bass subwoofer and amplifier enclosure box (rear-floor-mounted). Not to mention 16" 5-spoke machined aluminum wheels. Hot sound inside and good looks outside. It's the perfect combination.

Go on-line to get
all the specs, options
and colors available for Ranger.
Or, better yet, stop by a dealer
to see everything firsthand.

'07 Ranger XLT

fordvehicles.com



FORD RANGER MODEL LINEUP

RANGER XL



Get it done

- 3.0L OHV V6 engine (standard with 4x4)
- 2.3L DOHC I4 4-cylinder engine with 5-speed manual transmission (standard with 4x2)
- Independent short/long arm suspension
- Raised power dome hood
- Tire Pressure Monitoring System
- Personal Safety System®
- SecuriLock® passive anti-theft system
- Rally gauge cluster
- Gas-charged shock absorbers
- 60/40 vinyl split bench seat in Regular Cab; cloth in SuperCab
- AM/FM stereo with clock and two speakers
- Stone guards, front and rear (4x2)
- Front stone guards (4x4)
- Rear mud flaps (4x2/4x4 w/6' & 7' box with Regular Cab; 4x4 w/6' box with SuperCab)

Price: **\$19,300***

EPA: +

+ 24 city/29 highway (4x2 Manual O/D)**

RANGER STX



Cruising the boulevard

- 2.3L DOHC I4 4-cylinder engine (standard with Regular Cab and with 2-dr. SuperCab)
- 3.0L OHV V6 engine with 5-speed manual transmission
- Uniquely styled, contoured styleside pickup box, exterior STX graphics, tri-color taillamps
- Unique body color trim; black horizontal bar grille insert with body color grille surround; body color lower valance with integrated fog lamps
- 15" machined "split-spoke" cast aluminum wheels
- Exclusive Rally Gauge Package and two-tone cloth sport bucket seats with center floor console

Price: **\$15,440***

EPA: +

+ 18 city/23 highway (4x2)**

RANGER XLT



Comfortably equipped

- Air conditioning
- AM/FM stereo with single CD player, four speakers, MP3 capability and audio accessory input jack
- High-Series Ranger door trim with cloth inserts and map pockets
- Color-coordinated carpet and carpeted floor mats
- Front and rear stone guards
- Chromed grille, body color bumpers, fog lamps (4x4) and black tow hooks (4x4)

Price: **\$20,790***

EPA: +

+ 18 city/23 highway (4x2)**

RANGER SPORT



Price: **\$20,105***
EPA: +

Some ego required

- Available TREMOR “wheels & tunes” 510-watt, 9-speaker sound system (exclusive on Sport)
 - 16” Y-spoke aluminum wheels on Sport/TREMOR (standard on SuperCab 4x4)
 - Body color exterior trim including grille, wheelip moldings with exposed ornamental fasteners, exterior mirror skull caps, door latch handles and bumper
 - Fog lamps
 - 15” 7-spoke silver painted wheels (standard with 4x2)
 - 15” 7-spoke chrome-clad steel wheels (standard with Regular Cab 4x4)
- + 18 city/23 highway (4x2)**

RANGER FX4 OFF-ROAD



Price: **\$23,705***
EPA: +

Map and compass optional

- 4.0L V6 with 5-speed manual transmission; limited slip rear axle
 - Skid plates (2)
 - P255/70R16 all-terrain OWL tires on 16” Y-spoke cast aluminum wheels
 - Leather-wrapped tilt steering wheel/cruise control
 - Step bars
 - Rugged textured vinyl flooring with front slush mats
- + 18 city/23 highway (4x2, manual O/D)**

RANGER FX4 LEVEL II



Price: **\$24,780***
EPA: +

Rediscovering America

- 15” Alcoa® forged aluminum wheels on BFG T/A KO 31x10.5 all-terrain RWL tires
 - Bilstein® gas shocks, Torsen® limited-slip rear axle
 - 3 skid plates and 2 silver-tone front tow hooks and one black rear tow hook
 - Two-tone front cloth sport bucket seats with center console
- + 18 city/23 highway (4x2, manual O/D)**

* Starting Manufacturing Retail Price, excluding taxes, title, and registration fees. Optional equipment not included.

**EPA estimated city/highway mpg based on base engine/transmission configuration.



Ranger's up for any challenge. Including rising gas prices. Because when it comes to fuel economy, this truck thinks big and acts small. Its 2.3L DOHC I4 boasts a best-in-class 24 city/29 highway mpg.* And if you're looking for plenty of strength in an entry V6, the 3.0L OHV V6 delivers 148 hp and 180 lb.-ft./torque. Need a real workhorse? The 4.0L SOHC V6 packs 207 hp and 238 lb.-ft./torque. You have driving needs. Ranger has an engine to match them.

*Manual transmission. Class is compact pickups.

FEATURED RANGER SPECIFICATIONS

INTERIOR FEATURES - SEATING	XL	STX	XLT	Sport	FX4 Off-Road	FX4 Level II
Front vinyl 60/40 split bench seat with child safety seat LATCH restraint (Regular Cab)	S	-	-	-	-	-
Front cloth 60/40 split bench seat with child safety LATCH restraint (standard in XL SuperCab; optional in Regular Cab)	O	-	S	S	S	-
Cloth sport bucket seats with center floor console (SuperCab)	-	-	O	O	O	-
Two-tone cloth sport bucket seats, adjustable driver's side lumbar support and center floor console and storage	-	S	-	-	-	S
Leather-trimmed sport bucket seats with center floor console and driver's side lumbar (SuperCab with automatic transmission)	-	O	O	O	O	O
Leather-trimmed 60/40 split bench seat (SuperCab with automatic transmission)	-	-	O	O	O	-
Rear vinyl jump seats (standard in 4-door SuperCab)	O	O	O	O	O	S

INTERIOR FEATURES - CLIMATE CONTROL	XL	STX	XLT	Sport	FX4 Off-Road	FX4 Level II
Air conditioning, manual (required with 4.0L V6 in XL and STX)	O	O	S	S	S	S

INTERIOR FEATURES - ENTERTAINMENT SYSTEMS	XL	STX	XLT	Sport	FX4 Off-Road	FX4 Level II
AM/FM stereo CD/MP3 capability with clock (2 speakers) and audio accessory input jack	O	O	S	S	S	-
AM/FM stereo in-dash 6 CD changer/MP3 capability and audio access. input jack (4 speakers)	-	O	O	O	O	O
AM/FM stereo receiver/Clock	S	S	-	-	-	-
Pioneer® 290-watt CD Sound System with MP3 capability(SuperCab only) Includes AM/FM in-dash 6-disc MP3/CD changer, audio accessory input jack, two-channel amplifier, 6 1/2" powered bass subwoofer with 9.2-liter enclosure, 5 1/4" polypropylene mid-range speakers, 6x8" dual-cone "full-range" rear speakers Requires 5-speed automatic transmission, front sport buckets with center floor console. Compatible with standard sport bucket seat configurations	-	O	O	O	O	O
TREMOR 510-watt Pioneer® AM/FM stereo/6-disc in-dash CD changer with MP3 capability-part of TREMOR Package (Sport SuperCab only) Includes 510-watt Audiophile Sound System, AM/FM stereo/in-dash 6-disc CD changer with MP3 capability with audio accessory input jack, multi-channel amplifier, 6x8" coaxial speakers (4), 10" bass subwoofer, subwoofer and amplifier enclosure box (rear floor-mounted); plus 16" 5-spoke machined aluminum wheels (4), P235/70Rx16 all-season OWL tires on 4x2 (4) or P255/70Rx16 all-terrain OWL tires on 4x4 (4) and TREMOR decal	-	-	-	O	-	-
SIRIUS is a registered trademark of SIRIUS Satellite Radio, Inc.	-	O	O	O	O	O

INTERIOR FEATURES - COMFORT AND CONVENIENCE	XL	STX	XLT	Sport	FX4 Off-Road	FX4 Level II
Tachometer/rally gauge cluster – black-faced with matching trim rings	S	-	S	-	S	-
Tachometer/gauge cluster – white-faced with black trim rings	-	-	-	S	-	-
Tachometer/gauge cluster – black faced with silver brushed trim rings	-	S	-	-	-	S
Warning chimes – headlamps on, key in ignition and fasten safety belt	S	S	S	S	S	S
Dome light, front with LH and RH door pin switches	S	S	S	S	S	S
Inside hood release	S	S	S	S	S	S

Powerpoint accessory outlet, 12-volt	S	S	S	S	S	S
Black urethane steering wheel	S	S	S	S	-	-
Leather-wrapped steering wheel (included with cruise control/tilt steering wheel on STX, XLT and FX4 only)	-	O	O	-	S	S
Power Equipment Group includes power windows, locks, sideview mirrors, and remote keyless entry (Includes standard high series interior door panels with map pockets for SPORT/TREMOR models)	-	O	O	O	S	S
Cruise control/tilt steering wheel (includes leather-wrapped steering wheel on STX, XLT and FX4 only)	O	O	O	O	S	S
Windshield wipers – intermittent	S	S	S	S	S	S
Mirror, rearview – day/night	S	S	S	S	S	S
Floor console with dual cupholders	S	S	S	S	S	S
Color-coordinated door trim panels with padded armrest and black door handles (except Sport with Power Equipment Group)	S	-	-	S	-	-
High-series door trim panels with cloth insert and map pockets (Sport with Power Equipment Group only)	-	S	S	S	S	-
Unique FX4 Level II high-series door trim panels with cloth inserts and map pockets	-	-	-	-	-	S
Visors, color-coordinated cloth with LH/RH strap	S	-	-	S	-	-
Visors, color-coordinated cloth with LH strap and RH vanity mirror	-	S	S	-	S	S
Black vinyl floor covering	S	-	-	-	-	-
Black rugged textured vinyl floor covering	-	S	-	S	-	-
Color-coordinated carpet and carpeted front floor mats	-	-	S	-	-	-
Black rugged textured vinyl floor covering and front “slush” mats	-	-	O	-	S	-
Driver/passenger assist handles, A-pillar mounted	S	S	S	S	S	S
Instrumentation panel – color-matched full-width pad, side window demisters, air registers, color-coordinated appliqué	S	S	S	S	S	S
Color-coordinated headliner	S	S	S	S	S	S
Bed extender (NA with available bedliner)	-	O	O	O	O	O
Smoker’s Package includes lighter and ashtray or ash cup (depending on interior style)	S	S	S	S	S	S

EXTERIOR FEATURES - APPEARANCE	XL	STX	XLT	Sport	FX4 Off-Road	FX4 Level II
Painted face bar – black bumper w/matching lower valance (standard on XLT 4x2)	S	-	S	-	-	-
Painted face bar – body color bumper with black lower front valance (standard on XLT 4x4)	-	-	S	S	-	-
Painted face bar – body color bumper with matching lower front valance, black horizontal center grille and integrated fog lamps	-	S	-	-	-	-
Body color front and rear step bumpers with matching lower front valance, black horizontal center grille, integrated fog lamps and painted face bar	-	S	-	-	-	-
Dark Shadow Grey front and rear step bumpers with black lower front valance and painted face bar	-	-	-	-	S	S
Grille – black “nostril bar” insert with black surround	S	-	S	-	-	-
Grille – chrome with chrome surround (standard on 4x4 and included w/optional XLT 4x2 Appearance Package)	-	-	S	-	-	-
Grille – body color “nostril bar” insert and surround	-	-	-	S	S	S
Grille – black “horizontal slat” insert with body color surround	-	S	-	-	-	-
Cargo box – Styleside 6’ (unique contoured style on STX)	S	S	S	S	S	S
Cargo box – Styleside 7’ (Regular Cab only)	O	-	O	-	-	-

Tailgate with quick-release feature	S	S	S	S	S	S
Mirrors, black LH/RH manual “sail mount”	S	-	S	-	-	-
Mirrors, LH/RH body color skull cap	-	S	-	S	-	-
Mirrors, power (optional in Power Equipment Group only)	-	O	O	O	S	S
Tow hooks (4x4 only) – 2 black steel in front	-	-	S	S	S	-
Tow hooks (4x4) – 2 silver-tone steel in front, 1 black steel in rear	-	-	-	-	-	S
Step bars – black (XLT & Sport - standard on 4x4 SuperCab only)	-	O	S	S	S	-
Headlights – complex reflector	S	S	S	S	S	S
Fog lamps (XLT requires 4x4)	-	S	S	S	S	S
Unique lower front valance with horizontal grille insert and integrated fog lamps	-	S	-	-	-	-
Bright Appearance Package (2 or 4 dr. SuperCab only; requires XLT Appearance Package on 4x2) Includes chrome skull-capped mirrors, bed rails with black-color resin end caps, step bars with nonskid surface, exhaust tip	-	-	O	O	-	-
XLT 4x2 Appearance Package: includes body color bumpers with black lower valance, fog lamps, chrome grille and grille surround, 15” 7-spoke chrome-clad steel wheels or optional 15” machined “split-spoke” cast aluminum wheels, and P225/70R15 all-season OWL tires. Available on 2.3 I4 3.0L and 4.0 V6 engines	-	-	O	-	-	-
Bright Trim Group (SuperCab with V6 engine only): includes chrome skull-capped mirrors (NA with Sport), chrome step bars with nonskid surface, exhaust tip	-	O	O	O	O	-

EXTERIOR FEATURES - PROTECTION	XL	STX	XLT	Sport	FX4 Off-Road	FX4 Level II
Dark Shadow wheelip moldings	-	-	-	-	S	S
Body color wheelip moldings	-	-	-	S	-	-
Stone guards, front/rear (4x2)	S	-	S	-	-	-
Stone guards – front; mud flaps – rear (4x2/4x4 with 6’ or 7’ box RC; 4x4 with 6’ box S/C) (w/o wheelip moldings)	S	S	S	-	-	-
Mud flaps – rear only on vehicles with wheelip moldings	-	-	-	S	S	S
Bedliner under the rail	O	O	O	O	O	O
4x4 skid plates – mid and aft (excludes XL/XLT R/C 4x4 w/7’ box. Only on XL 4x4 Reg.Cab, 6’ box and 4x4 2dr. SuperCab)	O	-	O	O	S	-
4x4 skid plates – front, mid and aft (SuperCab only)	-	-	-	-	-	S

EXTERIOR FEATURES - WINDOWS AND GLASS	XL	STX	XLT	Sport	FX4 Off-Road	FX4 Level II
Rear window with fixed glass and solar tint	S	S	S	S	-	-
Privacy Glass, rear quarter windows and back window	O	O	O	O	S	S
Sliding rear window (requires Privacy Glass)	O	O	O	O	O	O

POWER AND HANDLING - POWER	XL	STX	XLT	Sport	FX4 Off-Road	FX4 Level II
2.3L DOHC I4 2dr. 4x2 SuperCab and 4x2 Regular Cab models	S	S	S	-	-	-
3.0L V6 (not available on 4x4 SuperCab)	S	S	S	S	-	-
4.0L SOHC V6 (required on 4x4 SuperCab; not available on short wheelbase Regular Cab)	S	O	S	S	S	S
5-speed manual transmission with overdrive (2.3L, 3.0L, 4.0L) (NA 4x2 R/C)	S	S	S	S	S	S
5-speed automatic transmission with overdrive (all engines)	O	O	O	O	O	O

Electronic shift-on-the-fly transfer case (4x4)	S	-	S	S	S	S
POWER AND HANDLING -HANDLING	XL	STX	XLT	Sport	FX4 Off-Road	FX4 Level II
Power rack-and-pinion steering	S	S	S	S	S	S
Front suspension, independent short/long arm	S	S	S	S	S	S
Torsion bar – front (standard on XL and XLT 4x4)	S	-	S	S	S	S
Front stabilizer bar	S	S	S	S	S	S
Rear 2-stage leaf springs	S	S	S	S	S	S
Shocks, gas-pressurized	S	S	S	-	-	-
Shocks, Bilstein	-	-	-	-	-	S
Limited slip axle (requires 3.0L or 4.0L V6) Regular Cab 4x2 XL, STX and XLT limited slip applications require Payload Package #2	O	O	O	O	S	S
Payload Package #2 (Sport requires 4x4) includes increased rear spring rates; heavy-duty, gas-pressurized shocks (4x2); premium gas-pressurized shocks (4x4)	O	O	O	O	O	-
Class I trailer tow wiring harness, 4-pin	S	S	S	S	S	S
Class III Trailer Tow Package (requires V6 engine and full-size 15" conventional spare tire on 4x2 XL, XLT) Includes frame-mounted receiver hitch unit, spare tire option required on 4x2 XL and XLT	O	-	O	O	O	O
BFT Component Package for XLT 4x2/4x4; SPORT 4x4 (requires V6) Includes limited slip axle, Payload Package #2, Class III Trailer Tow Package	-	-	O	O	-	-

POWER AND HANDLING -WHEELS AND TIRES	XL	STX	XLT	Sport	FX4 Off-Road	FX4 Level II
15" argent painted (4) (4x2 only)	S	-	-	-	-	-
15" 7-spoke silver painted steel, (4) (XL 4x4, XLT and SPORT 4x2)	S	-	S	S	-	-
15" 7-spoke chrome-clad steel with bright center ornament (4) (XLT 4x2 91A; XLT and Sport 4x4 Regular Cab; optional with Sport 4x2 Regular Cab and included in the XLT 4x2 Appearance Package)	-	-	S	S	-	-
15" machined "split-spoke" cast aluminum, (4) (optional on XLT with 4x2 Appearance Package 91A)	-	S	O	-	-	-
16" Y-spoke cast aluminum wheel with silver painted insets (4) (standard on XLT SuperCab 4x4 and Sport SuperCab 4x4 and part of Sport TREMOR package)	-	-	S	S	S	-
16" twin-spoke cast aluminum with silver painted insets (4) (included on Sport SuperCab 4x2 or as part of the TREMOR Package)	-	-	-	S	-	-
15" Alcoa forged aluminum with dark shadow grey finish (4)	-	-	-	-	O	S
15" Alcoa forged aluminum with bright polish finish, 4	-	-	-	-	O	O
P225/70R15 all-season BSW, (4) (4x2 only)	S	-	S	-	-	-
P225/70R15 all-season OWL, 4 (included in XLT Appearance Package)	-	S	O	-	-	-
P235/75R15 all-terrain OWL (4) (standard on XL 4x4, XLT 4x4 Regular Cab and Sport 4x2)	S	-	S	S	-	-
P235/70R16 all-season OWL (4) (Included on 4x2 TREMOR Package only)	-	-	-	O	-	-
P255/70R16 all-terrain OWL (4) (standard on XLT, Sport and FX4/Off-Road 4x4 SuperCab; included in optional TREMOR Package (4x4)	-	-	S	S	S	-
31x10.5 BF Goodrich® KO (4)	-	-	-	-	-	S
Tire Pressure Monitoring System	S	S	S	S	S	S

SAFETY AND SECURITY - SAFETY	XL	STX	XLT	Sport	FX4 Off-Road	FX4 Level II
Personal Safety System® : includes Front Passenger Sensing System, dual-stage front driver and passenger airbags	S	S	S	S	S	S
SecuriLock® passive anti-theft ignition system (2.3L, 3.0L and 4.0L only) (V6 engine only)	S	S	S	S	S	S
Airbags – driver and right front passenger (manual passenger airbag deactivation)†	S	S	S	S	S	S
Four-wheel anti-lock braking system	S	S	S	S	S	S
Safety belts – height- adjustable front outboard position shoulder, manual lap/shoulder	S	S	S	S	S	S
LATCH – child seat attachment point (passenger front)	S	S	S	S	S	S
Fuel pump auto inertia shutoff	S	S	S	S	S	S
24-hour roadside assistance (3 years/36,000 miles)	S	S	S	S	S	S

S = Standard O = Optional - = Unavailable

Ford Division reserves the right to change product specifications at any time without incurring obligations.

† Always wear your safety belt and secure children in the rear seat.

WHEEL STYLES



15" Painted Steel Wheels
(standard on XLT and SPORT 4x2; XL 4x4)



15" Chrome-Clad Steel Wheels
(standard on XLT and SPORT Regular Cab 4x4;
included in XLT 4x2 Appearance Package; optional on SPORT Regular Cab 4x2)



15" Cast Aluminum Wheels
(standard on XLT)



16" Cast Aluminum Wheels
(standard on XLT SuperCab 4x4, SPORT/TREMOR and FX4 Off-Road)



16" Cast Aluminum Wheels
(standard on TREMOR 4x2 SuperCab; optional on SPORT 4x2 SuperCab)



15" Alcoa Forged Aluminum Wheels
(standard on FX4 Level II; optional on FX4 Off-Road)



15" Alcoa Polished Forged Aluminum Wheels
(optional on FX4 Off-Road and FX4 Level II)

COLOR OPTIONS



Redfire Clearcoat Metallic

Dark Shadow Grey Clearcoat Metallic

Torch Red Clearcoat

Screaming Yellow Clearcoat

Vista Blue Clearcoat Metallic



Black Clearcoat

Silver Clearcoat Metallic

Oxford White Clearcoat

Pueblo Gold Clearcoat Metallic

WHY FORD CREDIT?

At Ford Credit, auto financing is our specialty. Whether you purchase or opt for a Red Carpet Lease, we offer a range of terms and features that make your experience hassle-free. Contact your local Ford Dealer or visit us on the Web at www.fordcredit.com.



ROADSIDE ASSISTANCE

Every new Ford includes the assurance of a 24-hour emergency Roadside Assistance Program provided during the 3-year/36,000-mile limited warranty period. Ask your Ford Dealer for complete details on this program, which includes such services as fuel delivery, tire change, jump start, or even help when you're locked out of your vehicle.

NEW VEHICLE LIMITED WARRANTY

Under the New Vehicle Limited Warranty, you receive bumper-to-bumper coverage for 3 years/36,000 miles with no deductible. You also receive corrosion perforation coverage for five years with unlimited mileage and no deductible. Ask your Ford Dealer for a copy of the warranty.

HELPFUL FORD LINKS

Now that you've learned more about this Ford vehicle, we would like to recommend the following links that can help you get all the information you need about finding, purchasing and owning the Ford that's just right for you:



BOLD MOVES

[Fordvehicles.com](#) - The best place to get information about Ford cars, trucks, and SUVs.

[Get a Price Quote](#) - Request a quick price quote from a Ford Dealer in your area.

[Competitive Comparisons](#) - Get a detailed comparison of your favorite Ford vehicle and how it stacks up against the competition.

[Payment Calculator](#) - Find out how much you'll have to spend on your new vehicle with Ford Credit's Payment Estimator.

[Build & Price Your Ford](#) - Build and price your vehicle online - From performance to interior colors and everything in between.

[Search Dealer Inventory](#) - Find your vehicle at a Dealer near you.

[Locate a Dealer](#) - Our dealer locator lets you view your Ford dealer's services, hours, special promotions, and check new and used inventory.

[Incentives & Financing](#) - Keep up to date with current incentives and financing offers in your area.

[Compare Ford Trucks](#) - Visit the Truck Smart Guide[©] and find the Ford truck that's right for you.

[Schedule a Test Drive](#) - Sign up online to drive a next generation of Ford vehicle at a dealership near you.

[Certified Pre-Owned](#) - Ford Quality Checked Certified Pre-Owned Dealers - For pre-owned vehicles with Ford confidence!

[Ford Accessories Store](#) - These great accessories can make your Ford vehicle truly unique.

[Ford Credit](#) - Ford Credit online vehicle financing offers the tools you need to aid in your purchase decision including a Payment Estimator and instant credit approval

[My Ford](#) - The Official Website for Ford Vehicle Owners. Personalized maintenance schedules, exclusive offers & incentives, your service expense log and much more!

Disclaimer

Competitive comparisons based on publicly available information and Ford certification data at time of brochure creation. Some features discussed may be optional. Vehicles shown may contain optional equipment. Features shown may be offered only in combination with other options or subject to additional ordering requirements or limitations. Following creation of the brochure, certain changes in standard equipment, options and the like or product delays, may have occurred which would not be included in these pages. Your Ford Dealer is the best source for up-to-date information. Ford Division reserves the right to change product specifications at any time without incurring obligations.