

# 1975 Ford Granada

Elegance in a new, efficient size



*Granada 4-Door Sedan*

Granada • Granada Ghia

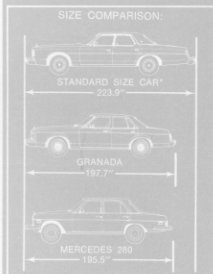
The closer you look, the better we look.

# New Ford Granada.

## Designed to give you efficient use of space, fuel and money.

### The design:

Granada is designed to help deal with inflated prices. Increased fuel costs. Maintenance. Crowded roads. Problems we all face today. It is a functional car. But it's also elegant, comfortable and a pleasure to drive. You have a choice of four models: 2- and



4-Door Granada Sedans; 2- and 4-Door Granada Ghia Sedans. Each model, we feel, has a design ahead of its time.

The size is new. Trim. Personal. About two feet shorter and half a ton lighter than most standard size cars. So you can expect excellent gas mileage. Granada has about the same weight as the Mercedes 280. Yet Granada will surprise you

inside, where five people can sit in comfort. With hats on. And stretch their legs. Granada's high roofline provides excellent front and rear headroom.

Squared-off rear end styling offers another nice surprise. The luggage compartment is roomy enough to hold eight assorted pieces of luggage.

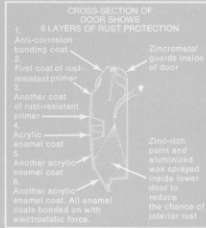
The look is new. And beautiful. Clean, contemporary lines. And functional. You can see what's happening all around. Full-circle. Glass area is generous. Without severe slants or curves.

Granada looks after your security. It has the Ford Lifeguard Design Safety Features found in larger cars like the Ford LTD, including side door beams, protective bumpers, and many others. In short, Granada is designed to be functional and efficient.

### The quality:

When you buy a new Granada, you have every right to expect outstanding quality. To help insure that every Granada reaches you with the high level of quality designed into it, we subject it to hundreds of inspections while it's being built.

Look at Granada closely. Body seams are in the minimum. Check fit and finish on doors.



### DESIGNED FOR SECURE CONTROL

Designed to distribute driver and passenger weight for solid road-holding

Front Disc Brakes for more fade resistance than drum-type brakes

Large windshield area for good visibility

Gas-saving, steel-belted radials for better cornering and traction than bias-ply tires



Hood. Deck lid. Check carpeting and trim. You'll see precision work. Attention to detail. The closer you look, the better we look.

## The construction:

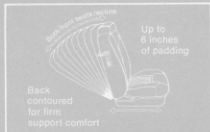


Granada is put together to stay together. Precision machinery holds body parts in tight alignment as they are welded into a solid unit. In a separate process, the body panels are treated to help minimize vibration. So Granada hugs the road with a solid, secure feel.

To help protect against rust, Granada's body is covered inside and out with 13 pounds of primers and tough, chip-resistant, baked enamel.

## The comforts:

Granada offers a lot of pure driving pleasure. A closer look shows that this car was thoughtfully planned for passenger riding comfort and durable good taste. Both contoured front seats recline and adjust to more than 100 positions for your individual comfort. (A feature you'll especially appreciate on long trips.)



Supple vinyl trim is standard. Super-soft vinyl is standard on the Ghias. Ultrasoft leather seating surfaces, and 100% nylon knit cloth with the look and feel of cashmere are available choices on the Ghia.

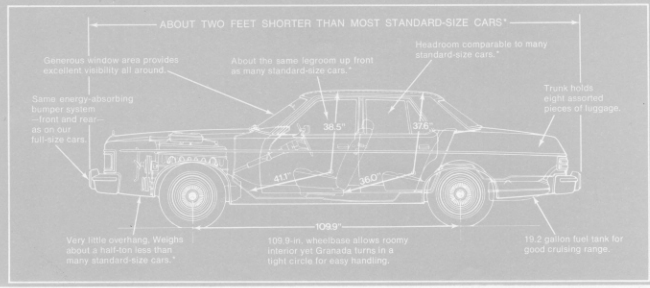
The instrument panel, with its handsome burled walnut woodtone accents, is recessed

to add to front passenger comfort. Controls are within easy reach. The plush nylon carpeting is stain resistant. There's weatherseal around doors and windows to cut wind noise.

## The economics:

A luxurious car these days should earn its keep. Granada doesn't back away from that fact. It comes with gas-saving, steel-belted radial ply tires that deliver excellent tread wear. It calls for 5000-mile oil change intervals, chassis lubes only once every 30,000 miles and has 3-year\*\* engine coolant antifreeze.

Even the engines make good sense. The standard 200 CID† Six on Granada, and the 250 CID Six on Ghia have small appetites. They are carefully balanced to resist vibrations that can cause wear. So are optional 302 and 351 CID V-8's. All engines feature solid state ignition for less scheduled maintenance than former systems.



†200 CID not available in California.  
\*\*35 or 40 months as indicated inside glove box.

\*All comparisons made with 1974 cars.

## The roadable, comfortable, economical Granadas.

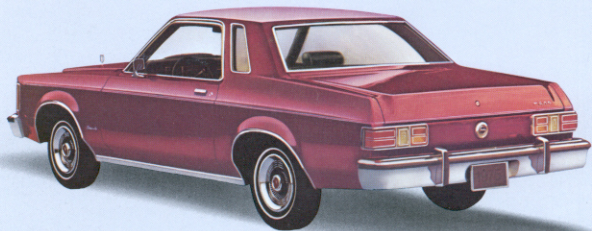
Enter Granada. With crisp, clean lines in a new, efficient family-size. Spacious inside, yet trim enough outside for remarkable agility.

On 2-Door and 4-Door Sedans offered in both Granada and Granada Ghia versions, wheelbase is 109.9". Yet Granada turns in a tight 39.4-foot circle. That's handling.

There's a wide stance: 58.5" front, 57.7" rear. You can carve curves and corners precisely. Hold the highway solidly in crosswinds. That's roadability.

Under the smart styling . . . proven standards like the 200 CID† Six (Granada) and 250 CID Six (Ghia) with 3-speed manual transmission. Manual front disc brakes. Gas-saving, steel-belted radials, that deliver excellent tread wear, and more. Check Notable Standard features on the back cover.

Handling. Roadability. Space. Beauty. Economy. Quality. All there. The closer you look, the better we look.



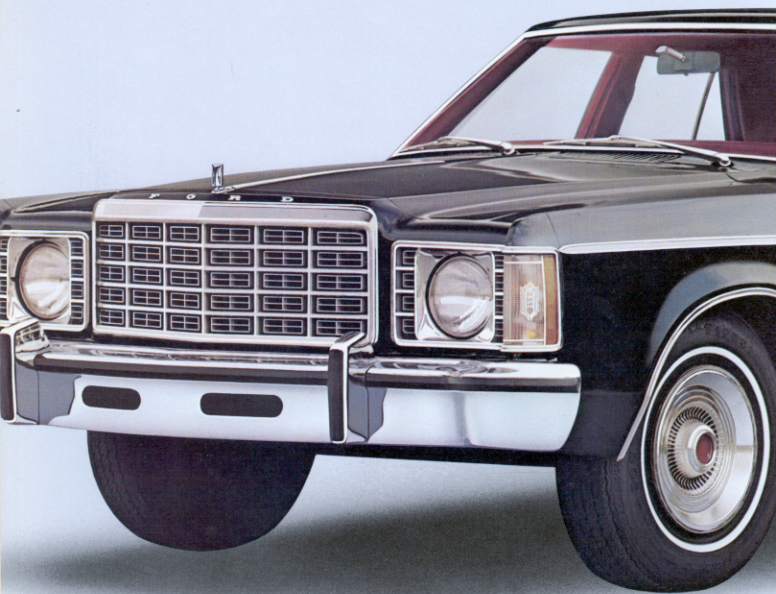
### Granada. Great as it comes.

Granada styling probably will command attention first. Tasteful touches like a classic new grille flanked by contemporary headlamps in bright, rectangular frames. Stand-up hood ornament. Bright rocker panel and wheel lip moldings. Deep-dish, finned-center design wheel covers. Wrap-around parking lamps with a filigree lens design. Wrap-around tri-color taillights with integral side markers. Opera windows on the 2-Door.

Inside luxury has so many elegant appointments you'll wonder whether you're admiring the top-of-the-line. Generous headroom, legroom and comfort will also surprise you. See interior details on pages 8 and 9.

**Roomy Granada 2-Door Sedan (above).** Note generous glass area without severe slants or curves for good visibility all around. Doors are large for easy entry, easy exit. Color here is Dark Red (Code 2M) one of 14 shades to choose from.

**Spacious Granada 4-Door Sedan (right).** Distinctively styled in Black (Code 1C), featuring bright, high-quality door frame moldings with mitred corners. Rear door hinges tip up for easy entry, easy exit.





## Granada Ghia. Extra styling and elegance.

We took the distinctive Granada and made it more so. With a vinyl roof. And matching vinyl bodyside moldings—plus integral wheel lip moldings. We included white sidewall steel-belted radials. And unique, spoke-like design wheel covers.

On 2-Door opera windows, we put the Ghia crest. On the 4-Door, the crest is on a center pillar vinyl applique. Both Ghias have bodyside, hood and deck lid paint stripes, plus a handy left-hand outside remote control mirror.

You ride quietly, too, thanks to deluxe sound and ride packages. And you ride in luxury. (See pages 8 and 9.)



**Granada Ghia 4-Door (top).** Note Ghia crest on center pillar vinyl applique matched to vinyl roof and vinyl bodyside moldings, plus wide wheel lip moldings. Bright picture-frame moldings around doors have mitted corners. A quality touch. Unique Ghia wheel covers here (and above) are also standard. Finish is Silver Blue Glow (Code 3M), with Black vinyl roof.

**Granada Ghia 2-Door.** From new grille to tri-color taillights, meticulous workmanship gives Ghia an extra touch of elegance. The 2-Door features opera windows (with crest), vinyl roof, WSW radials, and more—standard. Finish here is Medium Copper Metallic (Code 5M) with Tan vinyl roof.

**Notes:** See Notable Standard Features on back cover. Other items shown are optional.  
Option details on pages 10-11. See Color Code reference on back cover. 1200 CID not available in California.

## Inside Granada and Ghia—rich, roomy comfort.

Granada stylists thoughtfully designed interiors for comfort and durability. With sit-tall, stretch-out room for five. About the same legroom in front as many standard-size cars. And a high roofline for excellent headroom.

Nylon cut pile carpets the floor and lower door panels (except with White vinyl trim). Burlled walnut woodtone enhances the instrument panel. Contoured front seats recline individually and adjust to more than 100 positions for your comfort.

**The Granada interior** (see back cover), is trimly tailored in easy-care, long-wear vinyl. Door panels have pleated vinyl plus woodtone applique with crests. A woodtone insert graces the steering wheel.

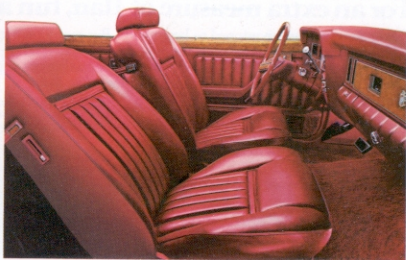
**The Ghia interior**, shown below and at the right, offers "floating pillow" cushioning, deluxe color-keyed belts, 22-oz. cut-pile carpeting and deluxe door trim. There are elegant refinements like assist handles. Seat back map pockets. Rubber insert scuff plates. Bright accelerator pedal trim. Digital clock. Luxury steering wheel. Day/night mirror. Even the Ghia trunk sports luxury dress-up touches.

Super-soft vinyl trim is standard. Fabric options are 100% nylon knit cloth (with the look and feel of cashmere), and Ultrasoft leather seating surfaces with vinyl touches at the footings. Very plush.



**Notes:** See Notable Standard Features on back cover. Other items shown are optional. Option details on pages 10-11. See Color Code reference on back cover.





Ghia assist handles on roof rails and seat backs (above) let passengers enter, exit gracefully. Handy pockets on seat backs hold road maps, etc.

Ghia interior, above, has "floating pillow" seats handsomely tailored in optional leather seating surfaces with vinyl at the footings, beautifully available in Silver Blue, Tan or Dark Red as shown here (Code FD). Luxurious Ghia interior, below, is impeccably trimmed in optional deluxe 100% nylon knit cloth with the look and feel of cashmere. Dark Red (Code DD) illustrated. Silver Blue, Green or Tan also available.



# GRANADA OPTIONS.

## For an extra measure of flair, fun and comfort.

Granadas come well equipped to begin with. But many owners prefer to tailor cars to their own tastes and to meet special driving needs. So Ford provides a wide array of quality options to choose from. Your Ford Dealer will be pleased to assist with your selection.

**Engines.** 250 CID Six (standard on Ghia). Spirited V-8's designed to operate efficiently on unleaded fuel. 302 CID 2V and 351 CID 2V. All engines feature solid state ignition for less scheduled maintenance than former systems. 3-speed manual transmission is available with 302 V-8 (except Calif.). The 351 V-8 requires SelectShift. Power front disc brakes are required with V-8 engines.

**Deluxe Belts.** Color-keyed, add touch of elegance. Standard on Ghia.

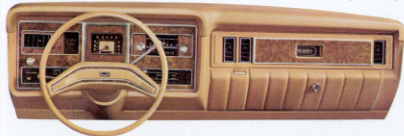
**Heavy-Duty Battery.** 53-amp. Capacity you need for cold starts, severe driving conditions.

**Trailer Towing Hitch—Class I.** Includes light hitch, wiring harness, towing plate.

**Interior Decor Group.** Luxury touches like super-soft vinyl seat trim with map pockets and assist straps • Ghia door trim (large, padded armrest on 2-Door) • quarter trim insert and padded armrest • deluxe color-keyed belts • 22-oz. cut-pile carpeting • scuff plates with rubber inserts • day/night mirror • luxury steering wheel • roof-mounted grab handles. See page 9. Standard on Ghia.

**Leather Seat Trim (Ghia).** Elegance of Ultrasoft leather seating and bolsters with vinyl touches at footings. Meticulously tailored. In Dark Red, Silver Blue or Tan. See page 9.

**Deluxe Cloth Seat and Door Trim (Ghia).** 100% nylon knit upholstery, with the look and feel of cashmere. Comes beautifully in Dark Red (DD), Silver Blue (DE), Medium Green (DG) or Tan (DU).



**SelectAire Conditioner.** Cools, warms, dehumidifies for year-round comfort.

**SelectShift Cruise-O-Matic Transmission.** Smooth, quiet 3-speed automatic, a great assist in all driving conditions. Can be shifted manually or automatically as you choose. Available with all engines.

### RADIOS

**AM.** Easy listening, easy on the budget.

**AM/FM Monaural.** Fine sound, includes dual rear seat speakers.

**AM/FM Stereo.** True stereo quality with four speakers, which include rear seat speakers.

**AM/FM Stereo with Tape Player.** Superb concert tone, four speakers and uninterrupted tape listening feature.

**Power Steering.** Fingertip steering makes parking a snap, driving almost effortless.

**Leather-Wrapped Steering Wheel.** Superb sporty touch. Soft, smooth feel, firm grip. Sewn with a handsome stitch.

**Fuel Monitor Warning Light.** Alerts you when engine manifold vacuum is below peak efficiency, so you can adjust driving habits to improve gas mileage.

**Electric Rear Window Defroster.** Thin conductive strips warm glass to clear mist or fog quickly for better visibility. Rear Window Defogger. Uses fan to clear glass.

**Deck Lid Luggage Rack.** Permanently mounted, adds load-carrying capacity.

**Bodyside/Deck Lid Paint Stripes.** Tasteful, decorative accent, standard on Ghia.

**Bodyside/Deck Lid Accent Moldings.** Add an attractive styling touch.

**Luggage Compartment Dress-Up.** Carpeting, spare tire cover, side linings, lower back panel trim. Sharp-looking, easy on fine luggage. Standard on Ghia.

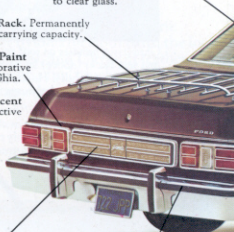
**Exterior Decor Group (Granada).** Adds elegance of a vinyl roof, lower back panel applique and bodyside/deck lid paint stripes.

**Deluxe Bumper Group.** Protective full-width horizontal rub strips on front and rear bumpers.

**Space Saver Tire.** Makes more luggage room available. Includes collapsible spare, wheel and pressurized inflating canister. Replaces regular spare tire.



**Digital Clock.** Quartz crystal controlled for accuracy. Tell time at a glance. It's as dependable as it is contemporary. Standard on Ghia.



**Vinyl Roof.** Odense grain, comes in Black, Silver, Silver Blue, Brown, Red, White, Green or Tan. Standard on Ghia.

**Power-Operated Sunroof.** Touch a switch for a window to the heavens. Touch again—it closes snugly.

**Tinted Glass.** Reduces glare, recommended with SelectAire Conditioner.

**Glamour Paints.** Reflective metallic colors: Silver Blue Glow (3M), Green Glow (4T), Tan Glow (5U). See Color Code reference on back cover.

**Power Front Disc Brakes.** Easy stopping power. Stubborn resistance to fade.

**Model shown:** Granada 2-Door Sedan in Dark Brown Metallic (Code 5Q) smartly coordinated with Tan vinyl roof.

**Vinyl Insert Bodyside Moldings.** Help protect beautiful body finish from nicks, especially in parking lots.

**Convenience Group.** Includes mirror vanity mirror, left- and right-hand remote control mirrors (LH standard on Ghia), inside day/night mirror and color-keyed deluxe belts (standard on Ghia).

**Power Side Windows.** Flick. At the touch of your finger, windows open or close. Driver has master control switch, windows have individual switch.

**Anti-theft Alarm System.** Actuates horn to deter tampering with locked car. Includes lockable inside hood release and spare tire lock. Security Lock Group. Peace of mind with inside lockable hood release, spare tire lock and locking gas cap.

**Protection Group.** Preserves newness, wards off premature wear with door edge guards (except Ghia), front floor mats, license plate frames.



**Light Group.** Headlamp warning buzzer, dome/map lights. Lights for under hood, glove box, ash tray, under the instrument panel, luggage compartment, and rear door courtesy lamp switches (4-Door Granada).



**Illuminated Visor Vanity Mirror.** Nice convenience for the lady. Included in Convenience Group.



**Simulated Spoke Aluminum Wheels.** Give your Granada a more distinctive touch.

**WSW Steel-Belted Radial Ply Tires.** Extra flair along with gas-saving virtues. Standard on Ghia.



**Floor Shift.** (Shown with SelectShift.) Gives you a nice, sporty touch. Required with 302 V-8 in combination with 3-speed manual transmission.



**Granada standard interior** with individual reclining contoured front seats beautifully trimmed in easy-care, long-wear vinyl. Silver Blue (Code AE) shown. Red, Tan, Black or Green also available. Super-soft vinyl trim in same colors is offered with optional Interior Decor Group. See page 10.

#### Notable Standard Features—Granada and Granada Ghia

**Functional:** 200 CID† Six engine with solid state ignition □ 3-speed manual transmission □ Manual front disc brakes □ Tri-color taillights □ BSW steel-belted radial ply tires □ Anti-theft deck lid lock □ Inside hood release □ Tipped rear door hinge (4-Door) □ All Ford Lifeguard Design Safety Features.

**Ghia Models** offer all above plus: 250 CID Six engine with solid state ignition □ WSW steel-belted radial ply tires □ Left-hand remote control mirror □ Dual note horn □ Deluxe color-keyed belts □ Rear door courtesy lamp switches (4-Door).

**Appearance & Comfort:** Opera windows and bright moldings (2-Door) □ Hood ornament □ Bright window, drip, belt, rocker and wheel lip moldings □ Mitred corner door-frame moldings (4-Door) □ Individual reclining seats with vinyl trim □ 12-oz. cut-pile carpeting □ Instrument panel with burl walnut woodtone applique □ Lockable glove box □ Cigar lighter □ Two rear seat ash trays □ Luggage compartment mat □ Sound and ride package □ Full wheel covers.

**Ghia models** offer above (except rocker panel moldings) plus: Vinyl roof □ Center pillar applique with Ghia crest (4-Door) □ Opera window crests (2-Door) □ Vinyl insert bodyside moldings, wheel lip moldings and lower back panel applique □ Hood, bodyside, deck lid paint stripes □ Super-soft vinyl "floating pillow" individual reclining seats with convenience pockets □ Deluxe door trim □ Rubber insert scuff plates □ 22-oz. cut-pile carpeting □ Bright accelerator pedal trim □ Luxury steering wheel □ Ghia interior ornamentation □ Seat back and roof rail mounted assist handles □ Day/night mirror □ Roof quarter applique (4-Door) □ Digital clock □ Luggage compartment carpeting, spare tire cover, side linings □ Deluxe sound and ride package □ Unique wheel covers.

**Notes:** See Notable Standard Features above. Other items shown are optional. See pages 10-11 for options in detail. See Color Code reference below. †200 CID not available in California.

#### NOTES:

The engine in your car is designed to operate on UNLEADED FUEL ONLY (cars sold in the U.S.A.). Leaded fuel can damage the catalytic converter and affect other emission control components.

For your convenience, Granada colors and interior trims are coded. Example: Polar White (Code 9D). Your Ford Dealer will be pleased to show you actual color chips and sample swatches of vinyl roof and interior trim materials.

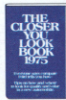
Replacement Parts. Your 1975 Ford Granada comes with factory engineered Motorcraft battery, oil filter, shock absorbers, Autolite Powertip Spark Plugs and other Ford approved precision parts. For continued top performance, be sure to specify Motorcraft Parts and Autolite Powertip Spark Plugs whenever replacement is necessary.

#### You drive in confidence.

Granadas are built with all of the Ford Lifeguard Design Safety Features. The Tot-Guard and Infant Safety Carrier shown here offer security for little ones, peace-of-mind for you. Ask your Ford Dealer about them. We care about you and those you care about.



**Quality.** We want you to check the care taken to provide quality fit and finish of body seams, doors and trim. Snug, flat carpeting. And we urge you to test-drive Granada's quiet, solid ride. These and other measures of quality are in the free, "The Closer You Look Book," you can pick up at your Ford Dealer's.



Illustrations and information presented were correct when approved for printing. Ford Division reserves the right to discontinue or change at any time, specifications or design without incurring obligations.

Some features shown or described are optional at extra cost. Most options are offered on all models. Some options are required in combination with other options. Availability of some models and features described may be subject to a slight delay. Always consult your Ford Dealer for the latest, most complete information on models, features, prices and availability.

**The closer you look, the better we look.**

**FORD GRANADA**

FORD DIVISION

