

'87 OLDSMOBILE



CUTLASS CIERA
CUTLASS SUPREME
CUTLASS CRUISER

Oldsmobile Quality.  Feel it.

“...to build one carriage
in as nearly perfect a manner
as possible...”

R.E. Olds, 1897

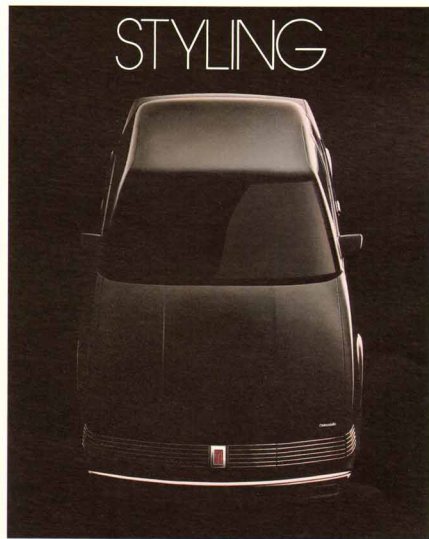
Every Oldsmobile that comes down the assembly line has our reputation riding on it. And we know it.

Car after car. Day after day. Since 1897. Over 27 million Oldsmobiles in all.

As America's oldest car company, our reputation means everything to us. We have a longstanding tradition to uphold.

So when you buy a new 1987 Oldsmobile, you can expect to find outstanding levels of quality—quality you know is built in, quality you can see and feel.

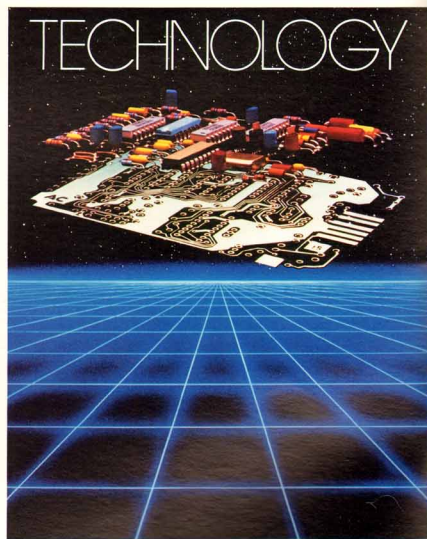
LET'S START FROM SCRATCH, AS WE
FOLLOW AN OLDSMOBILE DOWN THE LINE.



First, technology goes to work, as robotic welders apply thousands of precisely located welds to each body to ensure structural integrity. Strong and tough.

A computerized dimensional inspection system then verifies critical points for absolute accuracy, while robotic scanners measure dimensional exactness to 2/1,000 inch. Lasers and optic scanners inspect all body openings. That's quality...precise and accurate.

The body itself, of tough zincrometal and galvanized steel, is further protected by rust-resistant primers, plus hot melt wax clips on many models. That's quality...lasting and durable.

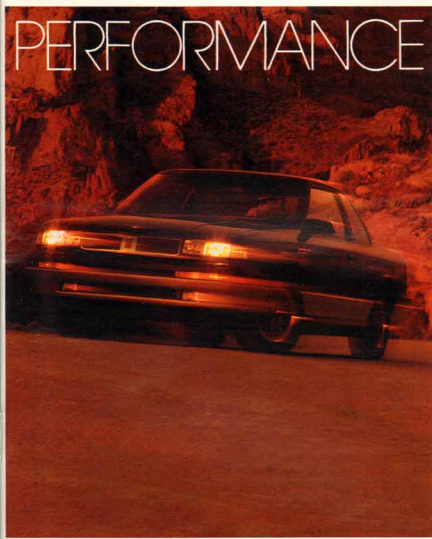


Then, automatic sprayers apply a tough multicoat/high-gloss enamel finish to many models. It is so lustrous and has such a deep sheen, the quality comes shining through.

The interior takes on form and substance with the addition of the full-foam seats and elegant velour fabrics. Meticulous. Seam after seam, stitch after stitch. That's quality you can see.

Oldsmobile's impressive ride and handling also take shape with the addition of one of several driver-tailored suspension systems.

Finally, a rugged, dependable engine—L4, V6, V8—fuel-injected or carbureted. For 1987, some engines have been

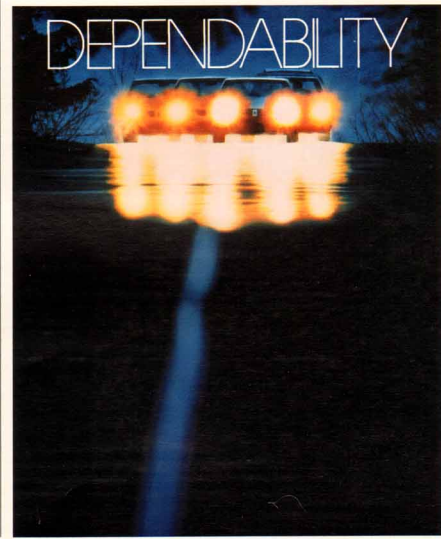


re-engineered to deliver a smoother operation and responsive performance. You'll feel the quality every time you turn the key.

TAKE THE WHEEL, AND GET THE QUALITY FEEL.

Choose the Oldsmobile model that is just right for you and your driving needs. That won't be a problem because Oldsmobile is offering 31 stylish models for 1987.

Then ask your Olds dealer for the keys, and take it for a test drive. In just a few blocks, you'll discover all the quality we've been describing here, quality you can see and feel and enjoy every mile you drive.



Oldsmobile Quality.  Feel it.

CIERA CUTLASS



You remind me of me.

*It all started out so simply. A phone call. A quiet meal.
And then that special show we always wanted to, but never had the time to see.
Who would have thought two people on a first date would find so much in common.
Even down to the style and color of the cars they drove.*

CUTLASS CIERA SL COUPE

Oldsmobile Quality.  Feel it.



The times demand quality, and one of America's favorite midsize cars, Cutlass Ciera, delivers it in stars.

Gaze inside and you'll see the kind of quality Olds is famous for. Beautiful tailoring surrounds you from head to toe. Press

down on the divided bench seating upholstered in thick, rich, Paris knit velour. Or, if your taste prefers leather, choose the

available Sierra grain in the seating areas on Cutlass Ciera Brougham and Cutlass Ciera SL.

Star quality continues with Cutlass Ciera's full list of standard features that include: room for six, rack-and-pinion steering, power front disc and rear drum brakes, 2.5-liter electronically fuel-injected Tech IV engine, MacPherson front strut suspen-

sion and your choice of Oldsmobile's three ride systems. The standard boulevard ride of Level I. The firm ride and handling of Level II and the true sports touring suspension of Level III (FE3).

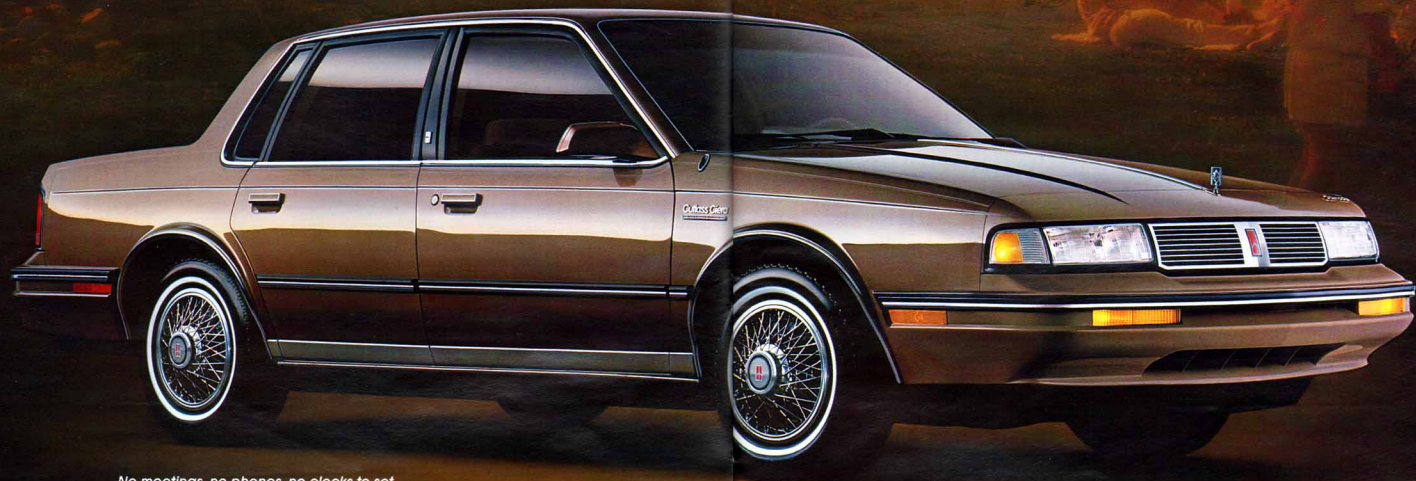
When it comes to power... choose

from the many available options; power windows, six-way seats (driver's side only), steering, air, door locks, trunk-lid lock release, pulse wiper system, rear defogger and electronic Cruise Control with resume and acceleration features. Sounds good!

There's also four different Delco sound systems to choose from.

Styling, comfort, power and performance. Cutlass Ciera's quality shines everywhere. Now comes the hard part. Choosing the one you want. Good luck!

CIERA CUTLASS

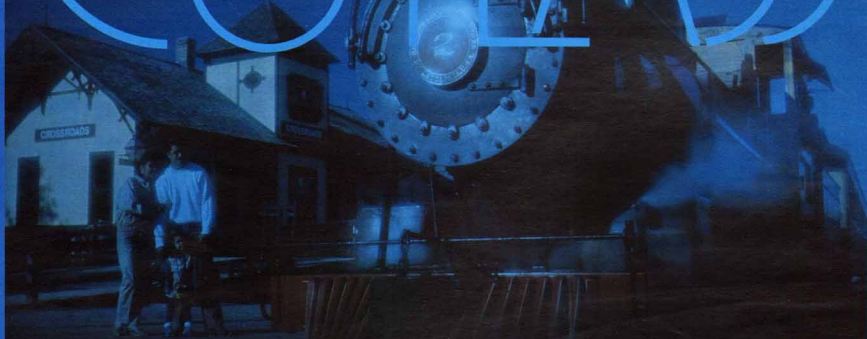


No meetings, no phones, no clocks to set...
today, you've found your private island in the sun.
A million miles from where you've been, and a million miles from where you
have to be. You've promised your best and given them your all.
It shows. Just look at the car you chose.

CUTLASS CIERA BROUGHAM SEDAN



CIERA CUTLASS



Your granddaddy always knew quality...

even back in the days when "iron horses" just like this one tied our country together. You know, your granddaddy would approve of our new Cutlass Ciera, too. Why he'd lean back, take a long, slow puff on his old black pipe and say, "Son, a man who works hard, buys quality, will never want for anything." Yes, your granddaddy knew exactly what he was talking about.

CUTLASS CIERA SEDAN



CIERA CUTLASS



They said, you were just another number...

but they obviously didn't know what made you tick. The "marathon"... that was your goal. And nothing was going to stop you. You sure showed them. Your style and stamina were incredible. Now they'll never forget your number or the car you drove away in.

CUTLASS CIERA S COUPE



CIERA UTLASS



The road...

twisting and turning like an accordion for a hundred miles at a swipe. But it's your choice. You, who always had to put the pavement to the test. And test it you did, mile after relentless mile. Some of those miles, dimly remembered. Others are etched there forever. Just like the car that took you there.

CUTLASS CIERA GT SEDAN



CIERA UTLASS



Playing to win...

has always been at the core of your existence. From high school, through college, to "that" big job, your competitive spirit has always kept you on top. Well, the same is true when it comes to the car you drive. Guess it just proves again that it pays to win.

CUTLASS CIERA GT COUPE



CUTLASS

CRUISER



It began at dawn...

*a long, hard ride full of every bit of excitement
you'd ever dreamed about. And now, with stories enough
to last you for a million fireside talks, you wrap it up
in fine fashion with the car that started it all.*

CUTLASS CRUISER BROUGHAM

Oldsmobile Quality.  Feel it.



You see, Oldsmobile is very proud of its line of Cutlass Cruisers. So much so that this year, you have two to choose from, Cutlass Cruiser and the new luxury edition, Cutlass Cruiser Brougham. Both come with 74.3 cubic feet of cargo area with the second

seat folded down and a host of standard Olds features like, power steering, power brakes, and automatic transmission, to name a few. Available features include the Level II firm ride and handling suspension system, Cruise Control, Tilt-Wheel Steering, Four-Season air conditioning and six-way

power seats (driver's side only), plus more. Also enjoy Cutlass Cruiser's full-foam bench seating, or choose the available Sierra grain leather in the seating areas on Cutlass Cruiser Brougham. Cutlass Cruisers. Now even better because there are two to choose from.

CUTLASS CRUISER



This is what it's all about.

Being together. Away from the things you have to do. Doing the things you want to do. Laughing and loving it all. Well, that's family. And like the family wagon, you wouldn't have it any other way.

CUTLASS CRUISER



Cutlass Ciera 55/45 custom divided bench seating in dark claret leather in seating areas. Also available in dark teal blue or light saddle.



Cutlass Ciera GT bucket seats. Choose medium gray or dark claret cloth or available leather in the seating areas.



Cutlass Ciera split bench seating. Offered in elegant Bronte velour. Five colors to choose from.



Cutlass Ciera custom bench seating. Five colors to choose from in Bronte velour.



Cutlass Ciera instrument panel with new proportionate steering wheel.

Available sun roof with removable tinted glass panel. Flip up or remove for ventilation. Or just enjoy the view.

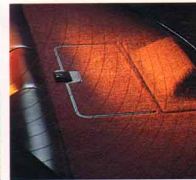


Available trunk-top luggage rack. Add style and more room with extra carrying space.



Large 15.8 cubic-foot-capacity trunk. Big enough to handle most everything you carry.

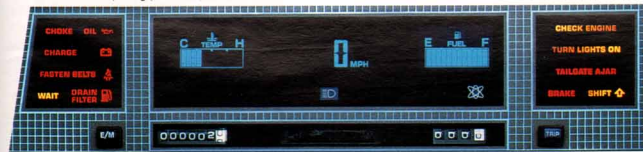
Perfect for your small, personal items. Available rear storage compartment on Cutlass Ciera Coupe.



Available auto trip calculator performs like any calculator—plus features displays of time, date, trip distance, elapsed time, estimated travel time, E.T.A., mileage since fill-up and current fuel economy. Includes English/metric conversion switch.



Available lighted day/night rearview mirror with dual concealed map/courtesy lamps for unobtrusive convenience.



Electronic instrument cluster is available. Offers easy-to-understand digital speedometer, bar graph fuel level and engine temperature gauges, low-fuel warning indicator, trip odometer, English/metric conversion switch, and turn signal indicators.

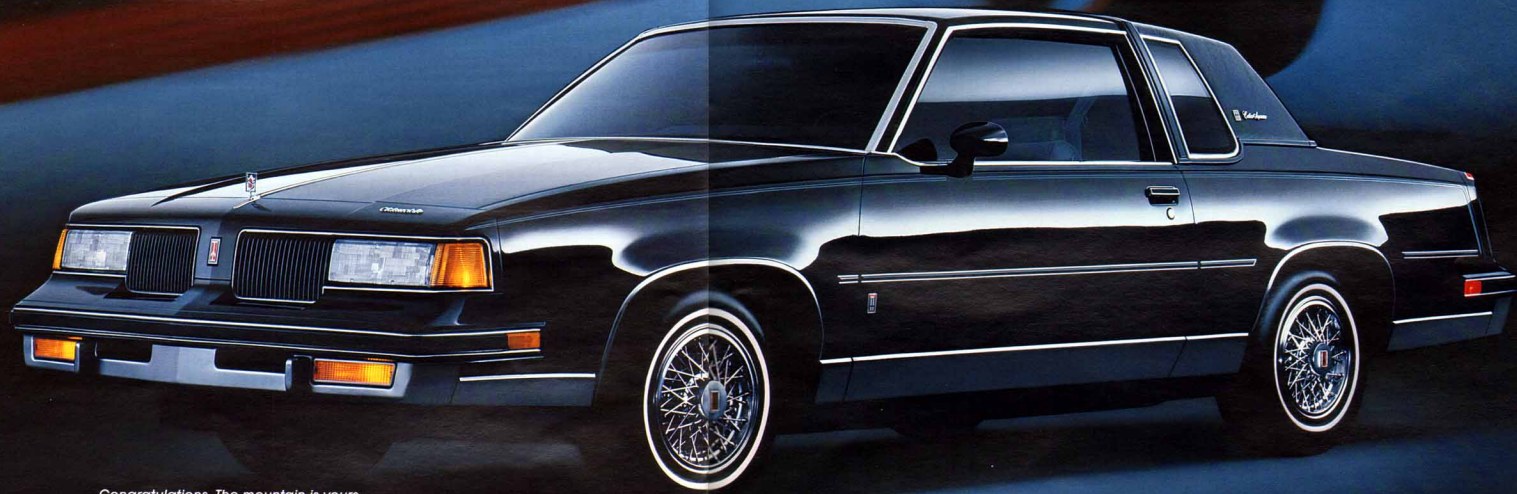


Available Rallye instrument panel cluster includes tachometer, trip odometer, voltmeter and temperature and oil pressure gauges. Standard on Cutlass Ciera GT.

Oldsmobile Quality.  Feel it.

CUTLASS


SUPREME



Congratulations. The mountain is yours.

Many only dream of doing what comes so easily to you. In microseconds, you seem to float from left to right, creating pure style in your wake. That's it! Style! The one word that sums up everything you do and drive.

CUTLASS SUPREME BROUGHAM COUPE

Oldsmobile Quality.  Feel it.



Quality, style and value... that's what makes Cutlass Supreme great!

And for good reason. Just look inside, and you'll see the elegant tailoring and attention to detail that have made

Cutlass Supreme one of America's favorite midsize cars.

Now enjoy deep-cushioned, full-foam covered seats in thick Summit knit velour, or choose available Sierra grain leather (in the seating area). You also get cut-pile carpet that runs from door to door.

And all sorts of available power appointments like: power windows, locks, air-conditioning, trunk-lid lock release, Cruise Control and pulse wiper system, to name a few.



Plus, Cutlass Supreme offers many quality Delco sound systems for you to choose from.

You'll also enjoy that famous boulevard ride of Cutlass Supreme. It's standard. Or, if you prefer, get a tight ride

with the available Level II suspension.

The quality continues in the way this Cutlass performs on the road. Step on the gas, and get the true performance of its standard 3.8-liter V6 engine. Take control of the road with power steering and power front disc and rear drum

brakes, and all-season radial tires that hold on to the road with sure-footed attention.

Cutlass Supreme's quality and style have made it a legend.

CUTLASS

SUPREME



*Quality and integrity—without them...
you're out of business. You've seen it happen to
so many. But, count your lucky stars, your company never lost sight
of them. First-class thinkers doing a first-class job. Smart,
dependable, just like the company car you drive.*

CUTLASS SUPREME BROUGHAM SEDAN



SUPREME

CUTLASS

DuBall & Daughters



*And then, there were three...
sisters. Growing up together. Now in business
together. Working so well together. One complementing
the other. Always looking out for the other. Smart sisters,
alike in so many ways... even down to their cars.*

CUTLASS SUPREME SEDAN



SUPREME

CUTLASS



*Who would have ever thought...
that a kid from Crooked Creek, Colorado, would make it to the top
in rodeo. But then, there was always something special about you. You had a style
all your own. A way of hanging in there that others could only try and imitate.
And try they did... right down to the car you chose.*

CUTLASS SUPREME COUPE



CUTLASS

SALON



They said, "Will you consider a job in the city?" You said...

"When do I start!" The city is energy. Raw. Powerful. And for those skilled enough to tame it... it offers all kinds of special rewards. For instance: to acquire that one-of-a-kind, kind of car you've always promised yourself.

CUTLASS SALON



CUTLASS

442



"Not just good, but great!"

That's how people tend to describe you. A real one-of-a-kind achiever, taking on all comers. A standout, whose actions speak for themselves. Like your car, for instance. The one that only someone like you would drive.

CUTLASS 442



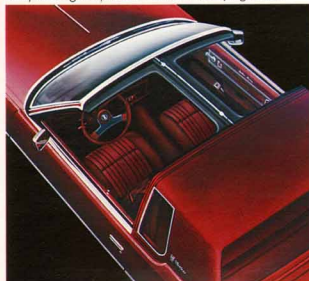
Cutlass Supreme Coupe offers available contour bucket seats upholstered in Bronte velour in four colors.



Center console cassette storage compartment keeps your music tapes handy under wraps. Standard with the available floor console.*



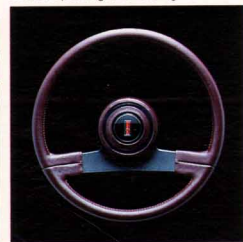
Available "lift-off" roof gives you the sun, fun and air of a convertible in Cutlass Supreme Coupe. Tinted tempered glass panels store in a carrying case.



Full-capacity trunk for carrying all your needs. 16.2 cu. ft. in coupe and 15.2 cu. ft. in sedan models.



Available sporty leather-wrapped steering wheel for that European grand-touring feel.



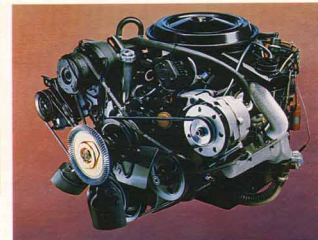
Cutlass Supreme custom bench seating. Upholstered in elegant Bronte knit velour. Five colors to choose from.



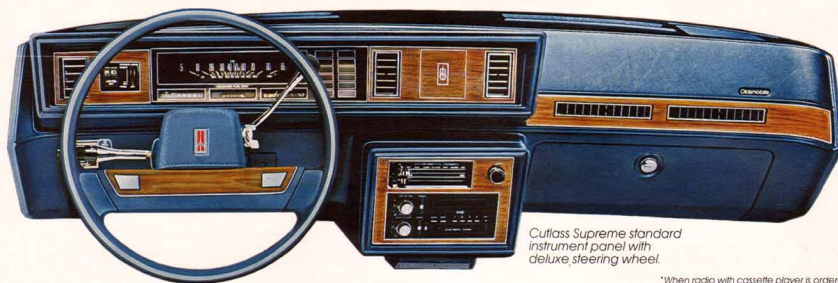
Sporty floor-mounted console with automatic stick shift is standard on Cutlass Salon.



For extra attention, get the available illuminated visor/vanity mirror. Lights up when opened.



Powerful 5.0-liter V8 (307 cu. in.), 4-barrel engine with a high-energy ignition system. Available with automatic overdrive transmission.



Cutlass Supreme standard instrument panel with deluxe steering wheel.

*When radio with cassette player is ordered.



Available Rallye instrument panel cluster. Includes: tachometer, trip odometer, voltmeter and temperature and oil pressure gauges.

Oldsmobile Quality.  Feel it.



Top row left to right.
Super Stock Chrome Wheel. Available for all Cutlass Supreme, Cutlass Supreme Brougham and Cutlass Salon models. • Super Stock Wheel is color-coordinated with Stainless Steel Trim Rings. Available for all Cutlass Ciera, Cutlass Cruiser, Cutlass Supreme and Cutlass Supreme Brougham models. Standard on Cutlass Salon. Not available on Cutlass Ciera GT Coupe or Sedan.

Middle row left to right.
Aluminum-Styled Wheel. Available for Cutlass Supreme, Cutlass Supreme Brougham and Cutlass Salon models. • Super Stock Chrome Wheel with color-coordinated accents. Standard and only available on Cutlass 442. • Aluminum-Styled Wheel with Argent Spokes. Standard on

Cutlass Ciera GT Coupe, Sedan, and included with FE3. Available for all Cutlass Ciera models including Cutlass Cruiser. Gold-colored Spokes may be ordered with selected primary colors.

Bottom row left to right.
Simulated Wire Wheel Disc with locks. Available for all Cutlass Supreme, Cutlass Supreme Brougham and Cutlass Salon models. • Deluxe Wheel Disc. Standard on all Cutlass Supreme and Cutlass Supreme Brougham models. • Simulated Wire Wheel Disc with locks. Available for all Cutlass Ciera models including Cutlass Cruiser. Not available on Cutlass Ciera GT Coupe or Sedan. • Deluxe Wheel Disc. Standard on all Cutlass Ciera models including Cutlass Cruiser. Not available on Cutlass Ciera GT Coupe or Sedan.



Radio description 1 below



Radio description 2 below



Radio description 3 below

DELCO SOUND SPECIALIST RADIOS

Radio	CUTLASS CIERA BROUGHAM/S1	CUTLASS CIERA	CUTLASS BROUGHAM	CUTLASS CRUISER	CUTLASS SUPREME BROUGHAM	CUTLASS SUPREME	CUTLASS SALON CUTLASS 442
1. Radio, Delco AM—includes dual front speakers	S1	S1	S1	S1	S1	S1	S1
2. Radio, Delco ETR AM-FM stereo with seek-scan, auto-reverse cassette and digital display clock—includes dual rear speakers	A	A	A	A	A	A	A
3. Radio, Delco ETR AM-FM stereo with seek-scan, auto-reverse cassette and digital display clock—includes dual rear speakers with extended range	A	A	A	A	A	A	A
4. Radio, Delco ETR AM stereo/FM stereo with seek-scan, auto-reverse cassette with music search, graphic equalizer and digital display clock—includes dual rear speakers with extended range	A	A	A	A	A	A	A

S—Standard equipment A—Available equipment T—May be deleted for credit *Requires C-QUAM. AM stereo broadcasts. Most AM stereo stations across the country broadcast in C-QUAM. Check with your local stations for compatibility in your area. C-QUAM is a registered trademark of Motorola, Inc.

CUTLASS CIERA/CUTLASS CIERA BROUGHAM AND S1/CUTLASS CRUISER BROUGHAM/CUTLASS CRUISER STANDARD AND AVAILABLE EQUIPMENT

POWERTRAIN:	CUTLASS CIERA BROUGHAM/S1	CUTLASS CIERA	CIERA GT PRIS	CUTLASS CRUISER BROUGHAM	CUTLASS CRUISER
	Engine, 2.5-liter I4 (Tech IV) with electronic fuel injection	A	A	A	A
Engine, 2.8-liter V6 with multipoint fuel injection	A	A	A	A	A
Engine, 3.8-liter V6 with sequential port fuel injection	A	A	A	A	A
Header/engine block	A	A	A	A	A
Transmission, 3-speed automatic with column shift	S	S	S	S	S
Transmission, 4-speed automatic overdrive with floor shift	A	A	S	A	A
CHASSIS:					
Brakes, power-assisted with front discs	S	S	S	S	S
Coilover equipment, high-capacity	A	A	A	A	A
Steering, power-assisted rack-and-pinion	S	S	S	S	S
Suspension system, Level I—MacPherson front strut	S	S	S	S	S
Suspension system, Level II—firm ride and handling—includes firm ride front and rear shock absorbers, larger front and saddle rear stabilizer bar, plus special steering gear	A	A	A	A	A
Suspension system, Level III (FE3)—tuning car ride and handling—includes special suspension components, plus wheels, aluminum-steel and tires P175/60R14 steel belted radial ply, blowoff!	A	A	S	A	A
Tire, compact spare	S	S	S	S	S
Tires, P185/75R14 steel belted radial ply, blowoff—all season	S	S	S	S	S
Tires, P195/75R14 steel belted radial ply, white stripe—all season	A	A	A	A	A
Tires, P195/70R14 steel belted radial ply, blowoff	A	A	A	A	A
Tires, P195/75R14 steel belted radial ply, blowoff—all season	A	A	A	A	A
Tires, P195/75R14 steel belted radial ply, white stripe—all season	A	A	A	A	A
Tires, P195/60R14 steel belted radial ply, blowoff	S	S	S	S	S
Wheels, discs, deluxe	S	S	S	S	S
Wheels, discs, simulated wire with locks	A	A	A	A	A
Wheels, 14 x 5.5 steel	S	S	S	S	S
Wheels, aluminum-styled with spokes	A	A	S	A	A
Wheels, super alloy—color-coordinated with stainless steel trim rings	A	A	A	A	A
EXTERIOR STYLING:					
Antenna, power front fender	A	A	A	A	A
Black front and rear fascia moldings, grille bars, hoodlamp housing, belt neck, drip moldings, door handles, top cylinders, outside mirrors and faked mist antenna	—	—	S	—	—
Bumper moldings, front and rear	S	S	S	S	S
Composite halogen headlamps	S	S	S	S	S
Full rectangular hoodlamps	S	S	S	S	S
Front-end panel rocket emblem and "Oldsmobile" lettering	—	—	—	—	—
Front fenders with or dam, log bumpers, rear fascia with aero extensions	—	—	S	—	—
Lamps, park/horn, integral with turners	S	S	S	S	S
Mirror, outside LH—black	A	A	A	A	A
Mirror, outside LH remote control—black	A	A	A	A	A
Mirrors, color-coordinated outside, LH remote control—RH manual*	A	A	A	A	A
Moldings, belt neck	S	S	S	S	S
Moldings, body 90K—black with bright inserts	A	A	A	A	A
Moldings, bright roller panel and wheel-opening	S	A	A	S	A
Moldings, bright roller drip	S	S	S	S	S
Moldings, lower body side	S	A	A	S	A
Ornamentation, hood-center molding and stand-up ornament (coupe models)	A	A	A	A	A
Paint scheme, two-tone body	A	A	A	A	A
Paint stripes, body	A	A	A	A	A
Paneling, body side and tailgate-wood grain vinyl	—	—	A	S	A
Stand-up ornament	S	S	S	S	S
Window frames, black	S	S	S	S	S
INTERIOR FEATURES:					
Armrests, front and rear	S	S	S	S	S
Ashtree, instrument panel and rear	S	S	S	S	S
Carpenter, well-to-well cutlery with cupholders (lower door panels—full length competing in cargo area in C-Quam)	S	S	S	S	S
Cigar lighter, instrument panel	S	S	S	S	S
Couette, full-length with shifter—bucket seats or divided seat required	A	A	S	A	A
Convenience group, underhood and trunk lamps, inside day/night mirror with heating lamp, visor vanity mirror, chrome fumes	A	A	A	S	A
Delogger, side windows	S	S	S	S	S
INTERIOR FEATURES: (Cont.)					
"Headlamp-on" warning tone	S	S	S	S	S
Instrument panel trim	S	S	S	S	S
Lamp, high-mounted stop	S	S	S	S	S
Lamps, glove box, dome and instrument panel entry	S	S	S	S	S
Mirror, inside day/night	S	S	S	S	S
Radio, Delco AM monorail—includes dual front speakers. May be deleted for credit	S	S	S	S	S
Steering wheel, deluxe	S	S	—	S	S
SEATING AND TRIMS:					
Safety belts, deluxe front and rear	S	S	S	S	S
Seat, 45/45 divided bench with individual controls	A	A	—	A	A
Seat, 55/45 divided front bench with individual controls	S	A	—	S	A
Seat, contour reclining bucket seats	—	A	S	—	A
Seat, custom bench with center armrest	—	S	—	—	S
Seat, rear-facing third seat—includes swing-out rear vent windows	—	—	—	—	A
Seat cushions, full-foam filled, front and rear	S	S	S	S	S
Trims, Bronco velour	—	S	—	—	S
Trims, Doosan grain vinyl	—	—	—	—	A
Trims, Paris knit velour	S	—	—	—	S
Trims, Sierra grain leather in seating areas	A	A	A	A	A
Trims, Stratos	—	—	S	—	—
COMFORT/CONVENIENCE FEATURES:					
Air conditioner, Four Season	A	A	A	A	A
Battery system, high-capacity	A	A	A	A	A
Cooling system, engine oil—recommended for trailer towing	A	A	A	A	A
Cruise Control, electronic with resume and acceleration features	A	A	A	A	A
Defogger, electric rear window	A	A	A	A	A
Door locks, power	A	A	S	A	A
Floor mats, auxiliary front carpet	A	A	S	A	A
Floor mats, auxiliary rear carpet	A	A	S	A	A
Headlamps, tungsten halogen (high beams)	S	A	S	S	A
Lamps, exterior (open) (Sedan and Cruiser Brougham models)	A	A	A	A	A
Leaving system, automatic electric	A	A	A	A	A
Lock, fuel filler cap	A	A	A	A	A
Luggage carrier, deck lid—chrome	—	—	—	—	—
Luggage carrier, rooftop—chrome	—	—	—	—	—
Mirror, illuminated, side-visibility—passenger side	A	A	A	A	A
Mirror, inside day/night with dual reading lamps	S	A	A	A	A
Radio speakers, dual rear with extended range	A	A	A	A	A
Seat adjuster, 6-way power, bucket seat—driver side	—	A	A	—	A
Seat adjuster, 6-way power, divided seat—driver side	A	A	A	A	A
Seat back recliner, chair side—manual	A	A	A	A	A
Seat back recliner, passenger side—manual	A	A	A	A	A
Steering wheel, deluxe with vinyl rim	A	A	—	A	A
Steering wheel, leather-wrapped sport	A	A	S	A	A
Steering wheel, tilt-only	A	A	A	A	A
Storage compartment, rear window filler panel (coupe models)	A	A	A	—	—
Sunroof, tinted glass removable panel	A	A	A	A	A
Tailgate lock release, power	—	—	—	—	—
Trunk lid lock release, power	A	A	A	A	A
Windows, power side	A	A	A	A	A
Windows, soft-ray tinted	A	A	A	A	A
Wiper system, pulse	A	A	A	A	A
INSTRUMENTATION:					
Cluster, instrument panel electronic—includes digital speedometer, bar graph fuel level and engine temperature gauges, low fuel warning indicator, trip odometer, English/metric conversion scales, plus turn signal indicators	A	A	A	A	A
Cluster, instrument panel Rallye—includes tachometer, trip odometer, voltmeter, temperature and oil pressure gauges	A	A	A	A	A
Instrument panel rate concave, digital readout—features a single color fluorescent display for time, date, trip distance, elapsed time, estimated distance to destination and estimated time of arrival. It also indicates mileage since fill-up, average fuel economy, time reminder, date reminder, plus English/metric conversion switch	A	A	A	A	A
S—Standard equipment A—Available equipment —Not available *Mirrors, black on GT					

Oldsmobile Quality. Feel it.



EXTERIOR DIMENSIONS	CUTLASS CIERA/CUTLASS CRUISER			INTERIOR DIMENSIONS	CUTLASS CIERA/CUTLASS CRUISER			CHASSIS DIMENSIONS	CUTLASS CIERA/CUTLASS CRUISER		
	Coupe	Sedan	2-Seat Wagon		Coupe	Sedan	2-Seat Wagon		Coupe	Sedan	2-Seat Wagon
Length (in.)	190.3	190.3	194.4	Headroom, front/rear (in.)	38.6/37.6	38.6/38.0	38.6/38.9	Wheelbase (in.)	104.9	104.9	104.9
Width (in.)	69.5	69.5	69.5	Legroom, front/rear (in.)	42.1/38.8	42.1/38.8	42.2/34.7	Tread, front/rear (in.)	58.7/57.0	58.7/57.0	58.7/57.0
Height (in.) (Curb)	54.1	54.1	54.5	Shoulder room, front/rear (in.)	56.0/56.9	56.2/56.2	56.2/56.2	Fuel Tank (gals.)	15.7	15.7	15.7
Curb Weight (lbs.)	2769	2753	2933	Trunk Capacity (cu. ft.)	5.8	5.8	5.8	Turning Diameter (ft.)	38.1	38.1	38.1
				Cutlass Cruiser max. cargo volume (cu. ft.)	74.3						
				Cutlass Cruiser front length from back of front seat to end of floor surface (in.)	75.4						

See EPA estimates in accompanying Fuel Economy Estimate Sheet

CUTLASS SUPREME/CUTLASS SUPREME BROUGHAM/CUTLASS SALON STANDARD AND AVAILABLE EQUIPMENT

POWERTRAIN:	CUTLASS SUPREME			CUTLASS SUPREME BROUGHAM			CUTLASS SALON		
	S	A	A	S	A	A	S	A	A
Engine, 3.8-ltr V6, 2-barrel	S	S	S	S	S	S	S	S	S
Engine, 5.0-ltr V8, 4-barrel	A	A	A	A	A	A	A	A	A
Heater, engine block	A	A	A	A	A	A	A	A	A
Transmission, 3-speed automatic	S	S	S	S	S	S	S	S	S
Transmission, 4-speed automatic, overdrive	A	A	A	A	A	A	A	A	A

CHASSIS:	CUTLASS SUPREME			CUTLASS SUPREME BROUGHAM			CUTLASS SALON		
	S	A	A	S	A	A	S	A	A
Battery system, high-capacity	A	A	A	A	A	A	A	A	A
Brakes, power front disc with rear drums	S	S	S	S	S	S	S	S	S
Cooling equipment, high-capacity	A	A	A	A	A	A	A	A	A
Cooling system, extra capacity	A	A	A	A	A	A	A	A	A
Steering, power-assisted	S	S	S	S	S	S	S	S	S
Suspension system, Level 1 - independent front with coil springs and stabilizer bar, plus coil springs rear	S	S	-	S	S	-	S	S	-

Suspension system, Level 1 - independent front with coil springs and large diameter stabilizer bar plus rear stabilizer bar with coil springs rear	-	-	S	-	-	S	-	-	S
Suspension system, Level 1 - firm ride and handling, includes firm ride front and rear shock absorbers, higher rate front and rear springs, large front stabilizer bar and rear stabilizer bar, plus special steering gear	-	-	-	-	-	-	-	-	-
Tire compact spare	S	S	S	S	S	S	S	S	S
Tires, P195/75R14 steel-belted radial-ply, blackwall - all season	A	A	A	A	A	A	A	A	A
Tires, P195/75R14 steel-belted radial-ply, white-stripe - all season	A	A	A	A	A	A	A	A	A
Tires, P205/70R14 steel-belted radial-ply, blackwall with raised white letters	A	A	A	A	A	A	A	A	A
Tires, P205/70R14 steel-belted radial-ply, white-stripe - all season	A	A	A	A	A	A	A	A	A
Tires, P205/75R14 steel-belted radial-ply, white-stripe - all season	A	A	A	A	A	A	A	A	A
Wheel discs, deluxe	A	S	S	A	S	S	A	S	S
Wheel discs, simulated wire with locks	A	A	A	A	A	A	A	A	A
Wheels, 14 x 6	S	S	S	S	S	S	S	S	S
Wheels, aluminum-styled with spokes	A	A	A	A	A	A	A	A	A
Wheels, super stock - chrome	A	A	A	A	A	A	A	A	A
Wheels, super stock - color-coordinated with stainless steel trim rings	A	A	A	A	A	A	A	A	A
Wiring harness, trailer electrical - 5-wire	A	A	A	A	A	A	A	A	A

EXTERIOR STYLING:	CUTLASS SUPREME			CUTLASS SUPREME BROUGHAM			CUTLASS SALON		
	S	A	A	S	A	A	S	A	A
Antenna, power front fender	A	A	A	A	A	A	A	A	A
Body stripes, special	-	-	S	-	-	S	-	-	S
Bumper guards, front and rear	S	S	S	S	S	S	S	S	S
Bumper lip strips, front and rear	S	S	S	S	S	S	S	S	S
Emblem, front-end panel pocket	S	S	S	S	S	S	S	S	S
Front fender script series identification (sedan models)	S	S	-	S	S	-	S	S	-
Headlamps, composite halogen (coupe models)	S	S	S	S	S	S	S	S	S
Headlamps, dual rectangular (sedan models)	S	S	S	S	S	S	S	S	S
Lamps, parking integral with front bumper	S	S	S	S	S	S	S	S	S
Mirror, outside LH (sedan models)	S	S	S	S	S	S	S	S	S
Mirrors, dual outside (coupe models)	A	A	A	A	A	A	A	A	A
Mirror, outside, LH side remote control - chrome (sedan models)	A	A	A	A	A	A	A	A	A
Mirrors, outside, LH and RH remote control - color-coordinated	A	A	A	A	A	A	A	A	A
Mirrors, outside, LH remote control and RH manual - chrome (coupe models)	A	A	A	A	A	A	A	A	A
Mirrors, outside, LH remote control and RH manual - color-coordinated	A	A	A	A	A	A	A	A	A
Moldings, belt reveal	S	A	S	S	A	S	S	A	S
Moldings, body side - color-coordinated with body color or vinyl rooftop, if ordered	A	A	A	A	A	A	A	A	A
Moldings, bright roof strip, rocker panel and wheel opening	S	S	S	S	S	S	S	S	S
Moldings, door-edge guard	A	A	A	A	A	A	A	A	A
Moldings, lower body side	S	A	S	S	A	S	S	A	S
Moldings, windshield and rear window - bright	S	S	S	S	S	S	S	S	S
"Oldsmobile" lettering on front-end panel (coupe models)	S	S	S	S	S	S	S	S	S
Side-panel script series identification (coupe models)	S	S	-	S	S	-	S	S	-
Strip-up ornament with hood-center molding	S	S	S	S	S	S	S	S	S

INTERIOR FEATURES:	CUTLASS SUPREME			CUTLASS SUPREME BROUGHAM			CUTLASS SALON		
	S	A	A	S	A	A	S	A	A
Armrests, front and rear	S	S	S	S	S	S	S	S	S
Audio, instrument panel and rear	S	S	S	S	S	S	S	S	S
Carpeting, wall-to-wall cut-pile with carpeted lower door panels	S	S	S	S	S	S	S	S	S
Cigar lighter, instrument panel	S	S	S	S	S	S	S	S	S
"Headlamp on" warning tone	S	S	S	S	S	S	S	S	S

INTERIOR FEATURES: (Cont.)	CUTLASS SUPREME			CUTLASS SUPREME BROUGHAM			CUTLASS SALON		
	S	A	A	S	A	A	S	A	A
Hood release, interior operated	S	S	S	S	S	S	S	S	S
Lamp, dome	S	S	S	S	S	S	S	S	S
Lamp, stop - high-mounted rear	S	S	S	S	S	S	S	S	S
Radio, Delco AM mono-rail - includes dual front speakers. May be deleted for credit	S	S	S	S	S	S	S	S	S

SEATING AND TRIMS:	CUTLASS SUPREME			CUTLASS SUPREME BROUGHAM			CUTLASS SALON		
	S	A	A	S	A	A	S	A	A
Safety belts, deluxe front and rear	S	S	S	S	S	S	S	S	S
Seat, 55/45 divided front bench with individual controls	S	A	-	S	A	-	S	A	-
Seat, contour bucket (coupe models)	-	A	-	-	A	-	-	A	-
Seat, contour reclining bucket	-	S	-	-	S	-	-	S	-
Seat, custom bench with center armrest	-	S	-	-	S	-	-	S	-
Seat cushions, full-foam front and rear	S	S	S	S	S	S	S	S	S
Trims, Brunie wire	-	S	-	-	S	-	-	S	-
Trims, Sunrall seat reburl	S	-	-	S	-	-	S	-	-

COMFORT/CONVENIENCE FEATURES:	CUTLASS SUPREME			CUTLASS SUPREME BROUGHAM			CUTLASS SALON		
	S	A	A	S	A	A	S	A	A
Air conditioner, Four Season	A	A	A	A	A	A	A	A	A
Astrotouch, electric sliding tinted glass panel (coupe models)	A	A	A	A	A	A	A	A	A
Cluster, instrument panel, radio gauges, tachometer, trip odometer, voltmeter, temperature and oil pressure gauges	A	A	S	A	A	S	A	A	S
Console, with floor shifter	-	A	S	-	A	S	-	A	S
Convenience group, underhood and trunk traps, rear vanity mirror	S	A	A	S	A	A	S	A	A
Cruise Control, electronic with resume and coastdown features	A	A	A	A	A	A	A	A	A
Defogger, electric rear window	A	A	A	A	A	A	A	A	A
Door locks, power	A	A	A	A	A	A	A	A	A
Floor mats, auxiliary front carpet	A	A	A	A	A	A	A	A	A
Floor mats, quality rear carpet	A	A	A	A	A	A	A	A	A
Lamp, combination dome and dual lens reading	A	A	A	A	A	A	A	A	A
Lamps, opera - exterior (sedan models)	A	A	A	A	A	A	A	A	A
Mirror, illuminated view vanity - passenger side	A	A	A	A	A	A	A	A	A
Monitor, exterior lamps, front and rear	A	A	A	A	A	A	A	A	A
Radio speakers, dual rear with extended range	A	A	A	A	A	A	A	A	A
Roof panels, removable tinted glass (coupe models)	A	A	A	A	A	A	A	A	A
Rooftop covering, full padded vinyl (sedan models)	A	A	-	A	A	-	A	A	-
Rooftop covering, full vinyl (sedan models)	A	A	-	A	A	-	A	A	-
Rooftop covering, padded vinyl (coupe models)	A	A	-	A	A	-	A	A	-
Seat adjuster, 6-way power, bucket seat - driver side (coupe models)	-	A	A	-	A	A	-	A	A
Seat adjuster, 6-way power, divided bench seat - driver side	A	A	-	A	A	-	A	A	-
Seat back reclining passenger side manual	A	A	-	A	A	-	A	A	-
Steering wheel, deluxe with vinyl trim	A	A	A	A	A	A	A	A	A
Steering wheel, leather-wrapped sport	A	A	A	A	A	A	A	A	A
Steering wheel, tilt-adjust	A	A	S	A	A	S	A	A	S
Trunk lid lock release, power	A	A	A	A	A	A	A	A	A
Windows, power side front (sedan models)	A	A	A	A	A	A	A	A	A
Windows, power side front (sedan models)	A	A	A	A	A	A	A	A	A
Windows, soft-ray tinted glass	A	A	A	A	A	A	A	A	A
Wiper system, pulse	A	A	A	A	A	A	A	A	A

SPECIAL PACKAGE:	CUTLASS SUPREME			CUTLASS SUPREME BROUGHAM			CUTLASS SALON		
	S	A	A	S	A	A	S	A	A
Cutlass 442 Package - features a special paint scheme of Medium Gray Metallic, Black, Dark Blue Metallic or Burgundy Metallic with Silver Metallic lower body accent color, separated by Gold Metallic accent stripe decal. Gold Metallic stripe decal is over wheel openings. Headlamp bezels are black with bright edging. parking lamp lenses are amber. front and rear bumpers are Silver, color-coordinated to match lower body accents. 442" decal on front doors, front-end panel, rear-end panel and interior on doors. Also included is Four-Season or conditioner, color-coordinated outside mirrors, driver's side remote control - passenger side manual, operating console with shifter, Level 1 firm ride and handling suspension system with rear air shock absorbers, Engine 5.0-ltr V8, 4-barrel high output with dual outlet exhaust system, transmission 4-speed automatic overdrive with 3.73 ratio, Steering wheel is leather-wrapped sport style, wheels 15" chrome-style with gold accents, tires P195/75R14 steel-belted radial-ply blackwall with white outlined letters. Rate instrument cluster gauges, high-capacity cooling system, bumper guards, front and rear included. Courier bucket seats are included and trimmed in Brunie wire in a choice of Red Blue, Medium Gray, Gold, Claret or Light Saddle, depending on exterior color combination chosen.	S	A	A	S	A	A	S	A	A

S=Standard equipment A=Available equipment --=Not available

Let's get it together... buckle up.

CUTLASS SUPREME	Coupe		Sedan		Interior Dimensions		Chassis Dimensions	
	Coupe	Sedan	Coupe	Sedan	Coupe	Sedan	Coupe	Sedan
Exterior Dimensions								
Length (in.)	200.0	200.4	Headroom, front/rear (in.)	38.1/38.3	38.7/37.8	Wheelbase (in.)	108.1	108.1
Width (in.)	71.6	71.9	Luggage, front/rear (cu. ft.)	42.9/36.3	42.8/37.0	Tread, front/rear (in.)	58.5/57.7	58.5/57.7
Height (in.) (Curb)	64.9	65.9	Fuel Tank (gals.)	56.7/56.1	56.1/50.0	Shoulder Room (in.)	16.1	16.1
Curb Weight (lbs)	3203	3247	Trunk Capacity (cu. ft.)	16.2	16.2	Turning Diameter (ft.)	38.2	38.2

*Headroom is reduced front and rear when Astrotouch is ordered. See EPA mileage estimates in accompanying Fuel Economy Estimate Sheet.

CUTLASS CIERA, CUTLASS SUPREME AND CUTLASS CRUISER PAINT COLORS



Important - A word about this catalog. We have tried to make this catalog as comprehensive and factual as possible, and we hope you find it helpful. However, since the time of printing, some of the information you will find here may have been updated. Also, some of the equipment shown or described throughout this Olds catalog is available at extra cost. Your dealer has details; before ordering, you should be brought up-to-date. The right is reserved to make changes at any time, without notice, in prices, colors, materials, equipment, specifications and models. Check with your Olds dealer for complete information.

A word about engines: Oldsmobiles are equipped with engines produced at facilities operated by GM car groups, subsidiaries or affiliated companies worldwide. See your dealer for details. Please refer to the

"Fuel Economy Estimate Sheet" provided to your dealer for engine source and EPA mileage estimates.

A word about assembly, components and optional equipment in these Oldsmobile products: The Oldsmobiles described in this catalog are assembled at facilities operated by General Motors or GM of Canada. These vehicles incorporate thousands of different components produced by car groups or various component divisions of General Motors and by various suppliers worldwide to GM. From time to time during the manufacturing process, it may be necessary, in order to meet public demand for particular vehicles or equipment, or to meet federally mandated emissions, safety and fuel economy requirements, or for other reasons, to produce Oldsmobile products with different components or differently sourced components than initially scheduled. All such components have been approved for use in Oldsmobile products and will provide the quality performance associated with the Oldsmobile name. With respect to extra-cost optional equipment, make certain you specify the type of equipment you desire on your vehicle when ordering it from your dealer. Some options may be unavailable when your car is built. Your dealer receives advice regarding current availability of options. You may ask the dealer for this information. GM also requests the dealer to advise you if the option you ordered is unavailable. We suggest that you verify that your car includes the optional equipment you ordered, or if there are changes, that they are acceptable to you.

Standard occupant protection features: Manual lap/shoulder safety belts for driver and right front passenger, (driver side includes visual and audible warning system) • Manual lap safety belts at each rear seat position (and center front, when applicable) • Energy-absorbing steering column • Energy-absorbing instrument panel • Energy-absorbing front seat back tops • Laminated safety windshield glass and tempered safety side and rear window glass • Safety interlocking door latches • Passenger-guard inside door lock handles • Inertia locking, folding front seat backs on Supreme coupes • Safety armrests • Adjustable head restraints, driver and right front passenger.

Standard accident avoidance features: Side marker lights and reflectors • Parking lamps that illuminate with headlamps • Four-way hazard warning flasher • Back-up lights • Center high-mounted stop lamp • Directional signal control with lane change feature • Windshield defroster, washer and dual speed wipers • Inside rearview mirror with vinyl-bonded glass • Outside left rearview mirror (also right side on Supreme coupes) • Brake system with dual master cylinder and warning light • Starter safety switch • Dual action hood latch system • Low-garage finish on instrument panel top, inside windshield moldings, wiper arms/blades, metallic steering wheel surfaces • Illuminated heater and defroster controls • Tires with built-in tread-wear indicators.

Standard theft deterrence features: Audible reminder for ignition key removal • Theft-deterrent steering column lock • Visible vehicle identification number.

A word about updated service information: Oldsmobile regularly sends its dealers useful service bulletins about Oldsmobile products. Oldsmobile monitors product performance in the field. We then prepare bulletins for servicing our products better. Now you can get these bulletins, too. Ask your dealer. To get ordering information, call toll free 1-800-551-4123.

The 1987 Oldsmobiles:

Tornado Coupe

Ninety-Eight Regency Brougham Sedan

Ninety-Eight Regency Brougham Coupe

Ninety-Eight Regency Sedan

Custom Cruiser

Delta 88 Royale Brougham Sedan

Delta 88 Royale Brougham Coupe

Delta 88 Royale Sedan

Delta 88 Royale Coupe

Cutlass Supreme Brougham Sedan

Cutlass Supreme Brougham Coupe

Cutlass Supreme Sedan

Cutlass Supreme Coupe

Cutlass Salon Coupe

Cutlass Cruiser Brougham

Cutlass Cruiser

Cutlass Ciera Brougham Sedan

Cutlass Ciera SL Coupe

Cutlass Ciera Sedan

Cutlass Ciera S Coupe

Calais Supreme Sedan

Calais Supreme Coupe

Calais Sedan

Calais Coupe

Firenza LX Sedan

Firenza LC Coupe

Firenza GT Hatchback

Firenza Sedan

Firenza Coupe

Firenza Hatchback

Firenza Cruiser



Oldsmobile
Oldsmobile Quality. Feel it.

