

2010 Lancer

RESUSCITATE YOUR SENSES

Lancer RALLIART named best
Overall Value of the Year
by IntelliChoice.com!



**Exhilaration comes standard. So does affordability.
But Lancer's crowd-pleasing price tag doesn't
require sacrificing any vanguard engineering.
Its exceptional range of performance, safety and
trim options along with bold styling, all add up to
make Lancer different for a reason.**



Why it's different for a reason

THE 2010 MITSUBISHI LANCER



Lancer ES in Graphite Gray

With Lancer, your drive is never just a way from A to B. Its advanced transmissions, MIVEC engines and racing inspired magnesium paddle shifters make every twist and turn an opportunity for fun. The available power glass sunroof lets the outside in, and seven standard airbags² give you just the security you need for an exceptional experience on the road.



Available Power Glass Sunroof



40GB HDD Navigation System.



DOHC MIVEC Engines



Seven Standard Airbags



Magnesium Paddle Shifters

2010 MITSUBISHI LANCER SPECIFICATIONS

Engine	DE	ES	GTS	RALLIART
Engine Type	2.0-liter 4-cylinder	2.0-liter 4-cylinder	2.0-liter 4-cylinder	2.0-liter turbocharged and intercooled 4-cylinder
Valvetrain	DOHC, 16-valve, Mitsubishi Innovative Valve-timing Electronic Control system (MIVEC)			
Horsepower/Torque	152 hp @ 6000 rpm / 146 lb-ft @ 4250 rpm (PZEV: 143/143) ³	152 hp @ 6000 rpm / 146 lb-ft @ 4250 rpm (PZEV: 143/143) ³	168 hp @ 6000 rpm / 167 lb-ft @ 4100 rpm (PZEV: 161/161) ³	237 @ 6000 / 253 lb-ft @ 2500-4750 rpm
EPA-estimated mpg (city/hwy)⁴	MT: 22/31 CVT: 23/30	MT: 22/31 CVT: 23/30	MT: 20/28 CVT: 22/29	17/25
Recommended Fuel	Regular Unleaded	Regular Unleaded	Regular Unleaded	Premium Unleaded
Fuel Tank Capacity (gal.)	15.6	15.6	15.6	14.5
Transmission				
Type	5-speed manual or Continuously Variable (CVT)	5-speed manual or Continuously Variable (CVT)	5-speed manual or Continuously Variable (CVT) with paddle shifters	6-speed Twin-Clutch Sportronic® Shift Transmission (TC-SST)
Suspension				
Front	MacPherson Strut, 20mm stabilizer bar	MacPherson Strut, 20mm stabilizer bar	MacPherson Strut, 21mm stabilizer bar	MacPherson Strut, 22mm stabilizer bar
Rear	Multi-link	Multi-link, 18mm stabilizer bar	Multi-link, 20mm stabilizer bar	Multi-link, 20mm stabilizer bar
Steering				
Type	Rack-and-pinion, Hydraulic Power Assist			
Turning Circle, curb to curb (ft.)	32.8	32.8	32.8	32.8
Brakes				
Front	10.9 in. ventilated disc	10.9 in. ventilated disc	11.6 in. ventilated disc	11.6 in. ventilated disc, 2-piston calipers
Rear	10.3 in. solid disc	10.3 in. solid disc	10.3 in. solid disc	10.3 in. solid disc
Control System	Anti-lock Brakes (ABS)	Anti-lock Brakes (ABS)	Anti-lock Brakes (ABS)	Anti-lock Brakes (ABS)
Wheels and Tires				
Tires	P205/60R16	P205/60R16	P215/45R18	P215/45R18 Yokohama Advan® summer tires
Wheels	16-inch steel with full covers	16-inch alloy	18-inch alloy	18-inch alloy
Exterior Dimensions				
Wheelbase (in.)	103.7	103.7	103.7	103.7
Length (in.)	180.0	180.0	180.0	180.0
Width (in.)	69.4	69.4	69.4	69.4
Height (in.)	58.7	58.7	58.7	58.7
Track, front/rear (in.)	60.2/60.2	60.2/60.2	60.2/60.2	60.2/60.2
Curb Weight (lbs.)	MT: 2911 CVT: 2977	MT: 2922 CVT: 2988	MT: 3010 CVT: 3076	3462
Interior Dimensions				
Head Room, front/rear (in.)	39.6/36.9	39.6 (38.5 w sunroof)/36.9	39.6 (38.5 w sunroof)/36.9	39.6/36.9
Shoulder Room, front/rear (in.)	54.7/54.3	54.7/54.3	54.7/54.3	54.7/54.3
Hip Room, front/rear (in.)	53.3/54.1	53.3/54.1	53.3/54.1	53.3/54.1
Leg Room, front/rear (in.)	42.3/36.1	42.3/36.1	42.3/36.1	42.3/36.1
Passenger Volume (cu. ft.)	93.5	93.5 (92.0 w/sunroof)	93.5 (92.0 w/sunroof)	93.5
Cargo Volume (cu. ft.)	12.3	12.3 (11.8 w/subwoofer)	12.3 (11.8 w/subwoofer)	12.3 (11.8 w/subwoofer)

Performance	DE	ES	GTS	RALLIART
Magnesium steering wheel paddle shifters	—	—	Standard (with CVT only)	Standard
Sport-tuned suspension	—	—	Standard	—
RALLIART-tuned suspension	—	—	—	Standard
All-Wheel Control (AWC)	—	—	—	Standard

Exterior

Xenon High Intensity Discharge (HID) Headlamps	—	—	Package	Package
Fog lights	—	Package	Standard	Standard
Front grille with chrome surround	—	Standard	Standard	—
RALLIART Grille and Bumper with chrome surround	—	—	—	Standard
Color-keyed folding power side-view mirrors and door handles	—	Standard	Standard	Standard
Aluminum hood with heat extractor vents	—	—	—	Standard
Rear spoiler	—	Package	Standard	Standard
Chrome exhaust tip	Accessory	Package	Standard	Standard
Dual exhaust	—	—	—	Standard

Safety and Security

Reinforced Impact Safety Evolution [RISE] unibody construction with front and rear crumple zones	Standard	Standard	Standard	Standard
Seven airbags, including dual advanced front airbags, front seat-mounted side airbags, roof-mounted curtain airbags for front and outboard rear seats and driver's knee airbag ¹	Standard	Standard	Standard	Standard
Active Stability Control and Anti-lock Braking System	Standard	Standard	Standard	Standard

Comfort and Convenience

Power windows, mirrors and door locks	Standard	Standard	Standard	Standard
Manual air conditioning	Standard	Standard	—	—
Automatic climate control	—	—	Standard	Standard
FAST-Key electronic keyless entry and starting system	—	Package	Package	Standard
60/40 split rear seats	—	Standard	Standard	Standard
Full-color LCD multi-information display	—	—	Standard	Standard

Audio and Technology

140-watt CD/MP3 audio system	Standard	Standard	Standard	Standard
Bluetooth® hands-free phone system with voice command recognition	—	Standard (Pre-wiring only)	Standard	Standard

Option Packages

Sun & Sound Package: 710-watt (max.) Rockford Fosgate® performance audio system with 6-CD/MP3 and nine speakers, including trunk-mounted sub woofer; SIRIUS® Satellite Radio w/3-mo. pre-paid subscription; 10-inch subwoofer: DSP; Power glass sunroof; FAST-Key Entry System	—	Optional	Optional	—
ES Sport Package: Front and side air dams; Rear wing spoiler; Fog lights; Chrome exhaust tip; Leather-wrapped steering wheel	—	Optional	—	—
Navigation Package: 40GB HDD Navigation with Music Server; Diamond Lane Guidance; Auxiliary input jack	—	—	Optional	—
Touring Package: Leather seating surfaces; Heated front seats; Xenon HID Auto on/off headlamps; Rain sensing wipers; Sound insulating windshield glass (requires Touring Package)	—	—	Optional	—
Recaro® Sport Package: Recaro® sport front seats; HID Auto on/off headlamps; 710-watt (max.), Rockford Fosgate® performance audio system; SIRIUS® satellite radio w/3-mo. pre-paid subscription	—	—	—	Optional

Disclaimers

1 2009 Lancer RALLIART. **2** Airbags are part of a Supplemental Restraint System (SRS). To decrease the risk of injury from a deploying air bag, all occupants must be properly restrained and seated well back, upright and in the middle of the seat. Do not lean against the door. Always place children 12 and under in the rear seat and use appropriate child restraints. Never place a rear-facing infant restraint in the front seat. See your owner's manual and instructions provided with your child restraint for more information. **3** PZEV engines are sold in California and other low-emissions states. **4** EPA estimates are to be used as a standardized comparison with other vehicles. Your actual mileage will vary depending on how you drive and maintain your vehicle.

The 2010 Mitsubishi Lancer

10-year

100,000-mile

LIMITED POWERTRAIN WARRANTY

5-YEAR/60,000-MILE

BUMPER-TO-BUMPER

7-YEAR/100,000-MILE

ANTI-CORROSION/PERFORATION

5-YEAR/UNLIMITED

ROADSIDE ASSISTANCE

It just makes sense: Our vehicles are different than any on the road, so why shouldn't our warranties be a cut above as well? At Mitsubishi, we're so confident in the quality, reliability and durability of the Lancer that we back it with one of the best Powertrain Limited Warranties in the business: 10 years or 100,000 miles.⁵ It's just one in a number of extensive warranties that come with the Lancer—a list that includes a 5-year/60,000-mile fully transferable bumper-to-bumper New Vehicle Limited Warranty, a 7-year/100,000-mile Anti-Corrosion/Perforation Limited Warranty and 5 years/unlimited miles Roadside Assistance. All designed to give drivers the security of knowing that their Lancer is engineered for the long-term, with a limited warranty designed to keep it on the road long into the future.

STARTING AT MSRP⁶ **\$14,790**

⁵ All coverage terms are from the original in-service date. The 10-year/100,000-mile Limited Powertrain Warranty applies only to the original owner of new, retail 2010 models purchased from an authorized Mitsubishi dealer. Subsequent owners receive the balance of the New Vehicle Limited Warranty of 5 years/60,000 miles. Different coverage applies to Lancer RALLIART. Lancer RALLIART has 3-year/36,000-mile coverage for New Vehicle and 5-year/60,000-mile coverage for Powertrain Limited Warranty. See retailer for limited warranty and roadside assistance terms and conditions.

⁶ Manufacturer's Suggested Retail Price. Excludes tax, title, license etc. Vehicle availability may vary. Actual prices set by retailers.

⁷ Not available on DE.

⁸ Not available on DE or ES.

Technical data, equipment and options shown are based on the latest information available at the time of printing and are subject to change without notice. Colors may vary due to the printing process. Exterior and interior lights on vehicles shown may be illuminated for illustration purposes only. Vehicles are shown with optional equipment. Not all equipment is available on every model. For complete details about equipment configuration and Mitsubishi Genuine Accessories, please contact your Mitsubishi retailer.

©2009 Mitsubishi Motors North America, Inc., 6400 Katella Ave., Cypress, CA 90630-0064 mitsubishicars.com 1-888-MITSU2010

EXTERIOR COLOR



Apex Silver



Graphite Gray



Octane Blue⁷



Rally Red



Rotor Glow⁸

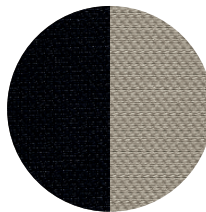


Tarmac Black

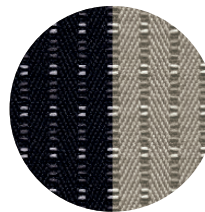


Wicked White

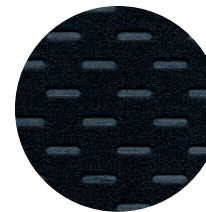
INTERIOR TRIM



Black/Beige Fabric
Black Trim
DE



Black/Beige Premium Fabric
Silver Trim
ES



Black Sports Fabric
Geometric Print Trim
GTS



Black Leather
Geometric Print Trim
GTS Touring



Black Premium Sports Fabric
Geometric Print Trim
RALLIART

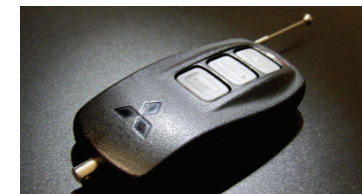
ACCESSORIES



Alloy Fuel Door



Navigation Unit



Remote Engine Start

- All weather floor mats
- Cargo mat
- Cargo organizer
- Front black out kit
- 6CD changer/tuner
- Exhaust finisher
- Fog lamps
- Front air dam

- Hands-free phone kit (Bluetooth®)
- Hood deflector
- Rear diffuser
- Lower grille garnish, chromed
- Mudguards
- Parking brake grip, aluminum
- Rear lip spoiler
- Rear wing spoiler

- Door scuff plates, aluminum
- Shift knob, aluminum
- Side mirror covers, chromed
- Side window deflectors
- Sunroof wind deflectors
- Wheel locks