

The Commercial Truckmaster

CHEVROLET

CHEVROLET TRUCKS



1927 Commercial Line

CHEVROLET MOTOR COMPANY, DETROIT, MICHIGAN

Division of General Motors Corporation

WORLD'S LARGEST BUILDER OF GEAR SHIFT TRUCKS

Truck for every Purpose

trucks are all-purpose built to make quick work of any job requiring half-ton capacity.

For your trucking requirements, you'll find that Chevrolet trucks guarantee you great efficiency and economy.

completely, dependably, and at low cost. With ample speed for highway driving—with plenty of power—with rugged, extra quality construction that keeps the truck in constant service, Chevrolet trucks guarantee you great efficiency and economy.

CHEVROLET MOTOR COMPANY, DETROIT, MICHIGAN
Division of General Motors Corporation

WORLD'S LARGEST BUILDERS OF GEAR SHIFT TRUCKS



for Economical Transportation

Sturdy 4-link chassis—steel frame—heavy boxed, long wheel-base springs—rugged rear axle—over-size brakes—steering gear and 3-speed, sliding gear transmission, truly Chevrolet's make, quality construction. And a host of mechanical improvements—including AC oil Star and AC air cleaner—refinements that protect the valve-in-head motor from excessive wear and maintain its select smooth power flow at its greatest efficiency.



The Chevrolet 1-Ton Truck Chassis

\$495 Each
F.O.B. Det.

Standard tire equipment 29" x 4.50" front, 29" x 5" rear. Optional tire equipment 30" x 5" front and rear, or 30" x 5" front and 32" x 5" rear, at small additional cost.



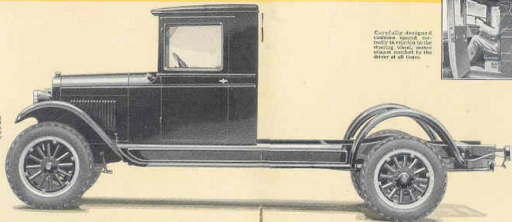
Close control on a truck chassis. Solid type doors, plate glass windows, fire-proof tires, fully enclosed body, full ventilating windshield, and comfortable spring cushions.



The instrument panel is conveniently located and is complete with speedometer, oil gauge, ammeter, and all other driving essentials.



The rear view window in the cab adds much to driving safety and control.



Carefully designed cushioned, sprung seat, in addition to the steering wheel, ensure utmost comfort to the driver at all times.

Note the heavy construction, the sliding plate glass windows, the fire-proof tires of the wide passenger car doors.



Attractive bullet type non-lamp mounted, all-steel windshield pillars; full vision ventilating windshield.

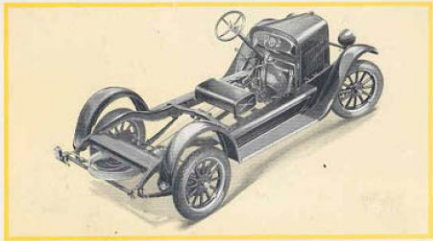


Note the solid type leather upholstery, the shock-proof passenger car door lock and the durable Palatka leather door lining.

The Chevrolet Chassis and Cab

\$610 Complete
Each Plus, Tax

Quality features that add greatly to the truck's appearance, and greatly increase its convenience of operation are embodied in the new Chevrolet cab and chassis equipment! Note the solid type construction of the cab—the full crown, one-piece fenders and bullet type lamps.

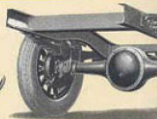


The Chevrolet 1/2-Ton Chassis

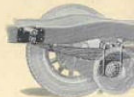
\$395
*L.S.B.
 Truck, Wash.*

The Chevrolet 1/2-Ton chassis provides the same AC oil bath, AC air cleaner and numerous other mechanical improvements that distinguish the Chevrolet 1-Ton chassis. A light, fast, dependable delivery truck that requires both low first cost and minimum operating expense.

Chevrolet's modern 2-speed transmission provides proper gear ratios for maximum power under all loading conditions.



The raised Chevrolet rear axle provides a maximum clearance for heavy hauling duty.



Heavy-duty front crank type semi-elliptic frame—maintaining the load and chassis from the