

2018 Prius c



 **Let's  
Go  
Places**

# Let's break up the routine and explore with style.

Get behind the wheel and get away. The 2018 Toyota Prius c's smart tech and versatility will help you make your escape, while the sporty exterior details will give you a stylish look that's all your own. Thanks to its flexible flexible 5-door design, you can always bring your two- and four-legged friends. With its remarkable cargo space<sup>36</sup> and available 60/40 split fold-down rear seats, Prius c invites you to pack more gear and more good times into every trip. And you'll never miss a beat or a call with *Bluetooth*<sup>7</sup> with streaming audio<sup>6</sup> and the available Entune<sup>®</sup> App Suite.<sup>10</sup> Prius c helps you do it all with complete peace of mind, thanks to standard Toyota Safety Sense<sup>™</sup> C (TSS-C)<sup>21</sup> and the integrated backup camera.<sup>15</sup> It's time to take the fun even farther.



—  
“Our time is now.  
Let's make our escape  
and explore our limits”  
—



Prius c Three shown in Tide Pool Pearl.<sup>38</sup>  
See numbered footnotes in Disclosures section.



TOYOTA SAFETY SENSE™ C (TSS-C)

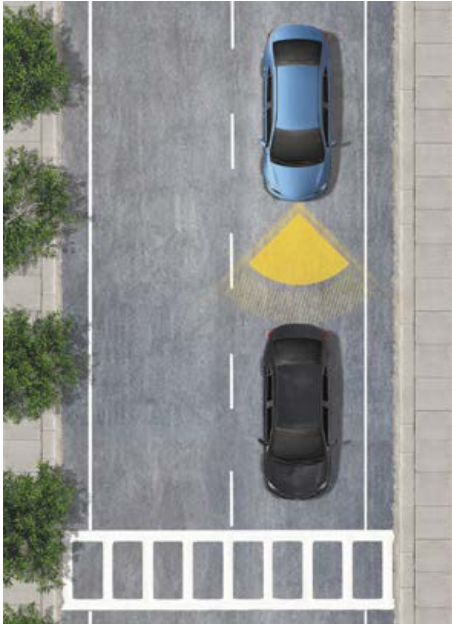


Prius c Three shown in Tide Pool Pearl.<sup>38</sup>



# Designed for safety.

Toyota Safety Sense™ (TSS)<sup>21</sup> is a bundle of active safety features on most new Toyota vehicles at no additional cost. These innovative features were designed to help protect you and your passengers from harm.



## PRE-COLLISION SYSTEM (PCS)<sup>22</sup>

Using an integrated camera and laser or radar to help detect other vehicles in front of you, the Pre-Collision System (PCS) can prompt you to take action using audio and visual alerts if it determines a frontal collision is likely. If you notice the potential collision and apply the brakes, PCS may apply additional force using Brake Assist (BA).<sup>19</sup> If you don't brake in time, PCS may automatically apply the brakes for you, helping to minimize the likelihood of a frontal collision or reduce its severity.



## LANE DEPARTURE ALERT (LDA)<sup>23</sup>

Under certain circumstances, Lane Departure Alert (LDA) is designed to detect lane departure on roads with clear markings. LDA only activates when you're traveling at a speed of 32 mph or faster. When you hear and see the alert, after carefully checking the road around you, you should safely direct your vehicle back to the center of your lane.



## AUTOMATIC HIGH BEAMS (AHB)<sup>24</sup>

Automatic High Beams (AHB) are a safety system designed to help you see more clearly at night — without blinding other drivers. Designed to activate at speeds above 25 mph, AHB rely on an in-vehicle camera to help detect the headlights of oncoming vehicles and taillights of preceding vehicles, then automatically toggle between high and low beams accordingly to provide the appropriate amount of light. By using high beams more frequently, the system may allow earlier detection of pedestrians and obstacles.

DESIGN AND VERSATILITY



Prius c Three shown in Tide Pool Pearl<sup>38</sup>

# All the space you need. All the style you want.

---

Stay in touch with your life no matter how far the road takes you. Prius c's smart tech and versatility will help you make your escape, while the expressive details and wide array of eye-popping colors are the perfect way to amp up any adventure. With 5-door access and available 60/40 split fold-down rear seats, Prius c can comfortably take you and your friends for a night out on the town or a trip out of it.



## 15-IN. ALLOY WHEELS

Stand out with standard all-new 15-in. 8 spoke machined alloy wheels with dark-gray-painted accents. If you really want to go big, Prius c is also available with 16-in. 8-spoke alloy wheels. No matter what size you choose, you'll always roll up in style.



## 60/40 SPLIT REAR SEATS

No problem fitting your gear, your crew, and your dog in the car. Prius c has plenty of room, thanks to the available 60/40 split fold-down rear seats. Not just 17.1 cu. ft. of cargo volume, but also a variety of ways to configure it.<sup>36</sup> It helps you pack even more excitement into every journey.



## VERSATILE DESIGN

Four passenger doors and a large rear liftgate help you and your friends get in and get going with ease. Load up for a road trip, a big move or even a long hike with your best friend. Prius c makes it easy for you to explore new places and bring everyone and everything along for the ride.

PREMIUM INTERIOR



Prius c Three interior shown in Blue/Dark Gray two-tone fabric.

# In touch with your life. More music, friends and fun.

Bring your music along for the ride and always know how to get there with Prius c's available Entune™ Premium Audio with Integrated Navigation<sup>9</sup> and App Suite.<sup>10</sup> When it's time to roll out, you can back up without asking for backup thanks to the standard integrated backup camera.<sup>15</sup> Once you're on the go, Prius c's standard *Bluetooth*<sup>®7</sup> wireless technology helps you stay in touch. It easily connects your contacts, playlists<sup>6</sup> and more to its steering wheel controls so you'll never miss a moment. It's time to have more fun with the tech that fits your life.



## INTEGRATED BACKUP CAMERA<sup>15</sup>

Get in and out of the tightest spots on your next getaway. Prius c has your back with its standard integrated backup camera. Shift into Reverse and the large display automatically shows what's behind Prius c, helping you avoid objects that might otherwise be out of view.



## BLUETOOTH<sup>®7</sup> WIRELESS TECHNOLOGY

Standard *Bluetooth*<sup>®</sup> wireless technology keeps you connected to your friends and favorite playlists, so you never have to miss a call, or your favorite road trip mix.<sup>5</sup>



## ENTUNE™ PREMIUM AUDIO WITH INTEGRATED NAVIGATION<sup>9</sup> AND APP SUITE<sup>10</sup>

Bring your music along for the ride with available Entune™ Premium Audio with Integrated Navigation and App Suite. Equipped with the tech you know, this smart multimedia system helps you locate your car, enjoy live radio stations with iHeartRadio, and Yelp® the perfect restaurant. And with real-time traffic info, getting to the fun is easier than ever.



INTERIOR



Prius c Three interior shown in Blue/Dark Gray two-tone fabric.

# A comfy space that invites more possibilities.

It's time to expand your potential and elevate your comfort game. Prius c offers a space that's tailored to you, with available SofTex®-trimmed seating that includes a 6-way adjustable driver's seat, and convenient tech like the available Smart Key System<sup>17</sup> that makes it easy to get in and out. A space this welcoming is sure to make every trip a comfy one.



## SMART KEY SYSTEM<sup>17</sup> WITH PUSH BUTTON START

It's easy to unlock all the fun with the available Smart Key fob in your pocket or purse. Simply grasp either the driver's or front passenger's door handle of your Prius c to unlock it. Plus, you can start the engine with the push of a button and start your next journey with ease.



## USB PORT<sup>3</sup>

Put an end to the power struggle. Charge your favorite device and sync your music to Prius c's audio system with the standard USB port. There's also an auxiliary audio jack that supports a wide range of music players, so your favorite playlist is never out of reach.



## HEATED SEATS AND MIRRORS

Chilly mornings are no excuse for missing the fun. Give your *Prius c* an added touch of comfort with available SofTex®-trimmed seating with heated front seats. Plus, you'll enjoy a frost-free view with available heated power outside mirrors.

HYBRID TECHNOLOGIES



Prius c Three shown in Blue Streak Metallic.

# More efficiency means more fun.

With the power to choose the perfect drive mode, Prius c won't let you miss out on any of the action. With an EPA-estimated 48 mpg city,<sup>37</sup> you can take on everything from errands to extended journeys, thanks to its proven hybrid tech and eco-minded efficiency. It helps make trips to that secret hiking trail easier on your wallet too.



## ENERGY MONITOR

Learn how to optimize your efficiency. The energy monitor screen displays how the hybrid system works in real time. It shows you how Prius c always employs the most efficient source of power.



## EV<sup>16</sup>/ECO MODE

Take charge and pick your perfect drive mode. Prius c's EV Mode enables electric driving for up to one half mile. ECO Mode limits the operation of the climate control and adjusts throttle input to help maximize fuel economy and give you more moments from each mile.



## ECO SAVINGS

With ECO Savings, you can easily compare a vehicle's fuel cost and mpg average to your Prius c. Once you know how much you may be saving, you may know how much more you can spend on that commemorative truck-stop coffee mug from your next adventure.

SAFETY TECHNOLOGY



Prius c Three shown in Absolutely Red with available moonroof (removes black roof rail accent).

# Peace of mind For a safer drive.

Prius c helps you travel safely with the standard Star Safety System™, a suite of six active safety features designed to help keep you safe. This advanced system includes Vehicle Stability Control (VSC);<sup>18</sup> Traction Control (TRAC), Electronic Brake-force Distribution (EBD), Anti-lock Brake System (ABS), Brake Assist (BA)<sup>19</sup> and Smart Stop Technology® (SST).<sup>20</sup>



## LATCH

LATCH (Lower Anchors and Tethers for CHildren) provides an added measure of safety for the smaller members of your family. LATCH includes lower anchors and tethers on the outboard second-row seats and a tether anchor on the middle seat of the second and third rows.



## NINE AIRBAGS<sup>25</sup>

Prius c comes standard with nine airbags, including a driver and front passenger Advanced Airbag System. In the event of certain collisions, a sensor designed to monitor the severity of the impact makes adjustments for the appropriate airbag deployment.



## WIL SEATING<sup>26</sup>

Whiplash-Injury-Lessening (WIL) seatback frames are engineered to yield in a controlled fashion, reducing the motion differential between the occupant's head and torso, and helping to lessen injury.



# ONE

## Exterior Features

- Single-LED projector low- and high-beam headlights
- LED tail and stop lights
- Black side rocker and wheel arch moldings
- Daytime Running Lights (DRL) with on/off feature
- Black roof rail accent
- Front and rear lower silver-accented body guards
- Power outside mirrors with turn signal indicators
- 15-in. 8-spoke machined alloy wheels with dark-gray-painted accents and P175/65R15 tires
- Color-keyed shark-fin antenna
- Intermittent rear window wiper
- Color-keyed rear spoiler

## Interior Features

- Automatic climate control
- Entune™ Audio — includes the Entune™ Multimedia Bundle<sup>2</sup> (6.1-in. touch-screen display, AM/FM CD player, MP3/WMA playback capability, four speakers, auxiliary audio jack, USB 2.0 port<sup>3</sup> with iPod<sup>®4</sup> connectivity and control, advanced voice recognition,<sup>5</sup> hands-free phone capability, phone book access and music streaming<sup>6</sup> via *Bluetooth*<sup>®7</sup> wireless technology) and Siri<sup>®</sup> Eyes Free<sup>8</sup>
- Integrated backup camera<sup>15</sup>
- 3.5-in. TFT Multi-Information Display with outside temperature, clock, fuel economy information, cruising range, odometer, trip distance, hybrid system information, Hybrid System Indicator, ECO Savings, ECO Score, energy monitor
- Fold-down rear seat
- Fabric-trimmed seats; 4-way adjustable driver's seat; 4-way adjustable front passenger seat
- Tilt/telescopic steering wheel with steering wheel controls
- Digital instrumentation with speedometer, fuel gauge, shift-position indicator, and EV<sup>16</sup>/ECO Mode indicators
- Remote keyless entry system with illuminated entry
- Power windows with driver-side one-touch auto up/down
- Glove compartment
- One front 12V auxiliary power outlet
- Front seat maplights

## Safety Features

- Toyota Safety Sense™ C (TSS-C)<sup>21</sup> — Pre-Collision System (PCS),<sup>22</sup> Lane Departure Alert (LDA)<sup>23</sup> and Automatic High Beams (AHB)<sup>24</sup>



# TWO

Adds to or replaces features offered on ONE

## Interior Features

- Entune™ Audio — includes the Entune™ Multimedia Bundle<sup>2</sup> (6.1-in. touch-screen display, AM/FM CD player, MP3/WMA playback capability, six speakers, auxiliary audio jack, USB 2.0 port<sup>3</sup> with iPod<sup>®4</sup> connectivity and control, advanced voice recognition,<sup>5</sup> hands-free phone capability, phone book access and music streaming<sup>6</sup> via *Bluetooth*<sup>®7</sup> wireless technology) and Siri<sup>®</sup> Eyes Free<sup>8</sup>
- Fabric-trimmed two-tone seats; 6-way adjustable driver's seat; 4-way adjustable front passenger seat with seatback pocket
- 60/40 split fold-down rear seats
- Cruise control
- Soft-touch center console with armrest and storage compartment
- Cargo area tonneau cover
- Cargo area light
- Engine immobilizer<sup>30</sup>



# THREE

Adds to or replaces features offered on TWO

## Interior Features

- Entune™ Premium Audio with Integrated Navigation<sup>9</sup> and App Suite<sup>10</sup> — includes the Entune™ Multimedia Bundle<sup>2</sup> (6.1-in. high-resolution touch-screen with split-screen display, AM/FM CD player with MP3/WMA playback capability, six speakers, auxiliary audio jack, USB 2.0 port<sup>3</sup> with iPod<sup>®4</sup> connectivity and control, advanced voice recognition,<sup>5</sup> hands-free phone capability, phone book access and music streaming<sup>6</sup> via *Bluetooth*<sup>®7</sup> wireless technology), Siri<sup>®</sup> Eyes Free<sup>8</sup>, Entune<sup>®</sup> App Suite,<sup>10</sup> HD Radio™<sup>11</sup> Technology, HD Radio™ Predictive Traffic and Doppler Weather overlay, AM/FM cache radio, SiriusXM<sup>®</sup> Satellite Radio<sup>12</sup> with 3-month complimentary SiriusXM All Access trial,<sup>13</sup> and Gracenote<sup>®</sup> album cover art. Access to Entune<sup>®</sup> App Suite<sup>10</sup> is subscription-free. See [toyota.com/entune](http://toyota.com/entune) for details.
- Entune<sup>®</sup> App Suite<sup>10</sup> — includes Destination Search, iHeartRadio, Movietickets.com, OpenTable,<sup>®</sup> Pandora,<sup>®14</sup> Facebook Places, Yelp<sup>®</sup> and Slacker Radio; real-time info including traffic, weather, fuel prices, sports and stocks. Access to Entune<sup>®</sup> App Suite<sup>10</sup> is subscription-free. See [toyota.com/entune](http://toyota.com/entune) for details.
- Smart Key System<sup>17</sup> on front doors and liftgate with Push Button Start and remote illuminated entry

## Options

- Power tilt/slide moonroof with sliding sunshade (removes black roof rail accent)



# FOUR

Adds to or replaces features offered on THREE

## Exterior Features

- Integrated LED fog lights
- Heated power outside mirrors with turn signal indicators
- Power tilt/slide moonroof with sliding sunshade (removes black roof rail accent)

## Interior Features

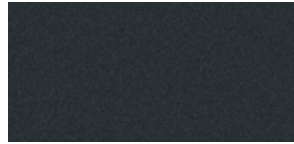
- SofTex®-trimmed seats with heated front seats; 6-way adjustable driver's seat; 4-way adjustable front passenger seat with seatback pocket
- SofTex®-trimmed tilt/telescopic steering wheel with steering wheel controls

## Packages

- Upgraded Wheel Package — includes 16-in. 8-spoke alloy wheels with P195/50R16 tires

## COLOR/TRIM/WHEELS\*

### Color



Black Sand Pearl



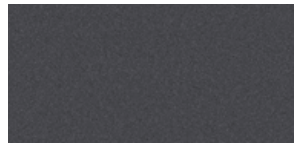
Blue Streak Metallic



Absolutely Red



Tangerine Splash Pearl<sup>38</sup>



Magnetic Gray Metallic



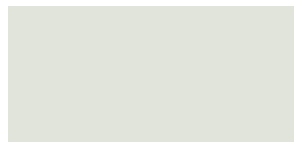
Classic Silver Metallic



Tide Pool Pearl<sup>38</sup>

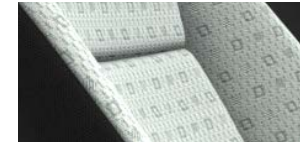


Sandstorm



Moonglow<sup>38</sup>

### Trim



Prius c ONE Gray fabric



Prius c TWO and THREE  
Blue/Dark Gray two-tone fabric



Prius c TWO and THREE  
Gray/Dark Gray two-tone fabric



Prius c FOUR Black SofTex®



Prius c FOUR Light Blue  
Gray SofTex®

### Wheels



15-in. 8-spoke machined  
alloy wheels with dark-gray-  
painted accents



16-in. 8-spoke alloy wheels



ACCESSORIES

Prius c has lots of Genuine Toyota Accessories available to help make every trip even more fun. Now your Prius c can reflect your unique style and stand out even more. Some accessories may not be available in all regions of the country. For a complete list of accessories, go to [toyota.com/Prius c](http://toyota.com/Prius_c).

All-weather floor liners<sup>39</sup>  
Alloy wheel locks  
Body side moldings  
Cargo net — envelope<sup>36</sup>

Cargo tote<sup>36</sup>  
Cargo tray  
Carpet cargo mat  
Carpet floor mats<sup>39</sup>

Coin holder/ashtray cup  
Door edge guards  
Emergency assistance kit  
First aid kit

Paint protection film<sup>40</sup>  
Universal tablet holder



Body side moldings



Cargo net — envelope<sup>36</sup>



Cargo tray



All-weather floor liners<sup>38</sup>



Cargo tote<sup>36</sup>



Door edge guards



Carpet floor mats<sup>39</sup>



Carpet cargo mat

FEATURES<sup>1</sup>

EXTERIOR	ONE	TWO	THREE	FOUR		ONE	TWO	THREE	FOUR
Single-LED projector low- and high-beam headlights	S	S	S	S	Heated power outside mirrors with turn signal indicators	—	—	—	S
Daytime Running Lights (DRL) with on/off feature	S	S	S	S	Power tilt/slide moonroof with sliding sunshade (removes black roof rail accent)	—	—	O	S
Integrated LED fog lights	—	—	—	S	15-in. 8-spoke machined alloy wheels with dark-gray-painted accents and P175/65R15 tires	S	S	S	S
LED taillights and stop lights	S	S	S	S	16-in. 8-spoke alloy wheels with P195/50R16 tires	—	—	—	O
Front and rear lower silver-accented body guards	S	S	S	S	Color-keyed shark-fin antenna	S	S	S	S
Black side rocker and wheel arch moldings	S	S	S	S	Intermittent rear window wiper	S	S	S	S
Black roof rail accent	S	S	S	—	Color-keyed rear spoiler	S	S	S	S
Power outside mirrors with turn signal indicators	S	S	S	—					
INTERIOR	ONE	TWO	THREE	FOUR		ONE	TWO	THREE	FOUR
Automatic climate control	S	S	S	S	Fabric-trimmed seats; 4-way adjustable driver's seat; 4-way adjustable front passenger seat	S	—	—	—
Entune™ Audio — includes the Entune™ Multimedia Bundle <sup>2</sup> (6.1-in. touch-screen display, AM/FM CD player, MP3/WMA playback capability, four speakers, auxiliary audio jack, USB 2.0 port <sup>3</sup> with iPod <sup>6/4</sup> connectivity and control, advanced voice recognition <sup>5</sup> ; hands-free phone capability, phone book access and music streaming <sup>6</sup> via Bluetooth <sup>6/7</sup> wireless technology) and Siri® Eyes Free <sup>8</sup>	S	—	—	—	Fabric-trimmed two-tone seats; 6-way adjustable driver's seat; 4-way adjustable front passenger seat with seatback pocket	—	S	S	—
Entune™ Audio — includes the Entune™ Multimedia Bundle <sup>2</sup> (6.1-in. touch-screen display, AM/FM CD player, MP3/WMA playback capability, six speakers, auxiliary audio jack, USB 2.0 port <sup>3</sup> with iPod <sup>6/4</sup> connectivity and control, advanced voice recognition <sup>5</sup> ; hands-free phone capability, phone book access and music streaming <sup>6</sup> via Bluetooth <sup>6/7</sup> wireless technology) and Siri® Eyes Free <sup>8</sup>	—	S	—	—	SofTex®-trimmed seats with heated front seats; 6-way adjustable driver's seat; 4-way adjustable front passenger seat with seatback pocket	—	—	—	S
Entune™ Premium Audio with Integrated Navigation <sup>9</sup> and App Suite <sup>10</sup> — includes the Entune™ Multimedia Bundle <sup>2</sup> (6.1-in. high-resolution touch-screen with split-screen display, AM/FM CD player with MP3/WMA playback capability, six speakers, auxiliary audio jack, USB 2.0 port <sup>3</sup> with iPod <sup>6/4</sup> connectivity and control, advanced voice recognition <sup>5</sup> ; hands-free phone access and music streaming <sup>6</sup> via Bluetooth <sup>6/7</sup> wireless technology), Siri® Eyes Free <sup>8</sup> , Entune® App Suite <sup>10</sup> , HD Radio <sup>11</sup> Technology, HD Radio™ Predictive Traffic and Doppler Weather overlay, AM/FM cache radio, SiriusXM® Satellite Radio <sup>12</sup> with 3-month complimentary SiriusXM All Access trial <sup>13</sup> and Gracenote® album cover art. Access to Entune® App Suite <sup>10</sup> is subscription-free. See <a href="http://toyota.com/entune">toyota.com/entune</a> for details.	—	—	S	S	Fold-down rear seat	S	—	—	—
Entune® App Suite <sup>10</sup> — includes Destination Search, iHeartRadio, MovieTickets.com, OpenTable®, Pandora®, Facebook Places, Yelp® and Slacker Radio; real-time info including traffic, weather, fuel prices, sports and stocks. Access to Entune® App Suite <sup>10</sup> is subscription-free. See <a href="http://toyota.com/entune">toyota.com/entune</a> for details.	—	—	S	S	60/40 split fold-down rear seats	—	S	S	S
Integrated backup camera <sup>15</sup>	S	S	S	S	Cruise control	—	S	S	S
3.5-in. TFT Multi-Information Display with outside temperature, clock, fuel economy information, cruising range, odometer, trip distance, hybrid system information, Hybrid System Indicator, ECO Savings, ECO Score, energy monitor	S	S	S	S	Tilt/telescopic steering wheel with steering wheel controls	S	S	S	—
SAFETY AND CONVENIENCE	ONE	TWO	THREE	FOUR		ONE	TWO	THREE	FOUR
<b>STAR SAFETY SYSTEM</b> ™ Star Safety System™ — includes Vehicle Stability Control (VSC) <sup>18</sup> Traction Control (TRAC), Anti-lock Brake System (ABS), Electronic Brake-force Distribution (EBD), Brake Assist (BA) <sup>19</sup> and Smart Stop Technology® (SST) <sup>20</sup>	S	S	S	S	SofTex®-trimmed tilt/telescopic steering wheel with steering wheel controls	—	—	—	S
Toyota Safety Sense™ C (TSS-C) <sup>21</sup> — includes Pre-Collision System (PCS) <sup>22</sup> Lane Departure Alert (LDA) <sup>23</sup> and Automatic High Beams (AHB) <sup>24</sup>	S	S	S	S	Digital instrumentation with speedometer, fuel gauge, shift-position indicator, and EV <sup>19</sup> /ECO Mode indicators	S	S	S	S
Nine airbags <sup>25</sup> — includes driver and front passenger Advanced Airbag System, driver and front passenger seat-mounted side airbags, driver knee airbag, driver and front passenger seat cushion airbags, and front and rear side curtain airbags	S	S	S	S	Remote keyless entry system with illuminated entry	S	S	—	—
Driver and front passenger Whiplash-Injury-Lessening (WIL) <sup>26</sup> seats	S	S	S	S	Smart Key System <sup>17</sup> on front doors and liftgate with Push Button Start and remote illuminated entry	—	—	S	S
					Power windows with driver-side one-touch auto up/down	S	S	S	S
					Soft-touch center console with armrest and storage compartment	—	S	S	S
					Glove compartment	S	S	S	S
					Cargo area tonneau cover	—	S	S	S
					One front 12V auxiliary power outlet	S	S	S	S
					Front seat maplights	S	S	S	S
					Cargo area light	—	S	S	S
					LATCH (Lower Anchors and Tethers for CHildren) includes lower anchors on outboard rear seats and tether anchors on all rear seats	S	S	S	S
					Tire Pressure Monitor System (TPMS) <sup>27</sup>	S	S	S	S
					Vehicle Proximity Notification System (VPNS) <sup>28</sup>	S	S	S	S
					Hill Start Assist Control (HAC) <sup>29</sup>	S	S	S	S
					Engine immobilizer <sup>30</sup>	—	S	S	S
					ToyotaCare <sup>31</sup> featuring a no cost maintenance plan with roadside assistance <sup>32</sup>	S	S	S	S

See numbered footnotes in Disclosures section.

S = Standard — = Not available

SPECIFICATIONS

**MECHANICAL/PERFORMANCE**

	<b>ONE</b>	<b>TWO</b>	<b>THREE</b>	<b>FOUR</b>
<b>GASOLINE ENGINE</b>				
1.5-Liter Aluminum DOHC 16-Valve with Variable Valve Timing with intelligence (VVT-i), EV <sup>15</sup> /ECO Modes; 73 hp @ 4800 rpm (54 kW @ 4800 rpm), 82 lb.-ft. @ 4000 rpm (111 N•m @ 4000 rpm); 99 hybrid system net hp (74 kW)	Standard	Standard	Standard	Standard
<b>BORE X STROKE</b>				
2.95 in x 3.33 in	Standard	Standard	Standard	Standard
<b>COMPRESSION RATIO</b>				
13.4:1	Standard	Standard	Standard	Standard
<b>INDUCTION SYSTEM</b>				
Sequential multi-point EFI with Electronic Throttle Control System with intelligence (ETCS-i)	Standard	Standard	Standard	Standard
<b>IGNITION SYSTEM</b>				
Electronic, with Toyota Direct Ignition (TDI)	Standard	Standard	Standard	Standard
<b>EMISSION RATING</b>				
Super Ultra Low Emission Vehicle (SULEV) <sup>33</sup>	Standard	Standard	Standard	Standard
<b>ELECTRIC MOTOR</b>				
Motor type: Permanent magnet AC synchronous motor	Standard	Standard	Standard	Standard
Power output: 60 hp (45 kW)	Standard	Standard	Standard	Standard
Torque: 125 lb.-ft. (169 N•m)	Standard	Standard	Standard	Standard
Voltage: 520V maximum	Standard	Standard	Standard	Standard
<b>TRACTION BATTERY</b>				
Type: Sealed Nickel-Metal Hydride (Ni-MH) <sup>34</sup>	Standard	Standard	Standard	Standard
Power output: 25.9 hp (19.3 kW)	Standard	Standard	Standard	Standard
Voltage: 144V	Standard	Standard	Standard	Standard
<b>TRANSMISSION</b>				
Electronically controlled Continuously Variable Transmission (ECVT)	Standard	Standard	Standard	Standard
<b>DRIVETRAIN</b>				
Front-Wheel Drive	Standard	Standard	Standard	Standard
<b>SUSPENSION</b>				
Independent MacPherson strut front suspension with stabilizer bar; torsion beam rear suspension	Standard	Standard	Standard	Standard
<b>STEERING</b>				
Electric Power Steering (EPS); power-assisted rack-and-pinion	Standard	Standard	Standard	Standard
Turning circle diameter, curb to curb (ft.)	31.4	31.4	31.4	31.4/37.4 <sup>35</sup>
<b>BRAKES</b>				
Power-assisted ventilated front disc brakes; rear drum brakes and Star Safety System™	Standard	Standard	Standard	Standard
<b>DIMENSIONS</b>				
<b>EXTERIOR DIMENSIONS (in.)</b>				
Overall height/width/length	59.6/68.6/162.4	59.6/68.6/162.4	59.6/68.6/162.4	59.6/68.6/162.4
Wheelbase	100.4	100.4	100.4	100.4
Track (front/rear)	58.3/58.1	58.3/58.1	58.3/58.1	58.3/58.1
Ground clearance	5.5	5.5	5.5	5.5
<b>INTERIOR DIMENSIONS (in.)</b>				
Head room (with moonroof)	38.6/37.0	38.6/37.0	38.6/37.0 (37.9/36.4)	37.9/36.4
Shoulder room	52.3/51.7	52.3/51.7	52.3/51.7	52.3/51.7
Hip room	51.0/50.8	51.0/50.8	51.0/50.8	51.0/50.8
Leg room	41.7/35.0	41.7/35.0	41.7/35.0	41.7/35.0

See numbered footnotes in Disclosures section.

SPECIFICATIONS (continued)

WEIGHTS/CAPACITIES	ONE	TWO	THREE	FOUR
Curb weight (lb.)	2530	2530	2530	2530
Seating capacity	5	5	5	5
Passenger volume (cu. ft.)	87.4	87.4	87.4	87.4
Cargo volume (cu. ft.) <sup>36</sup>	17.1	17.1	17.1	17.1
Fuel tank (gal.)	9.5	9.5	9.5	9.5
TIRES				
Spare: Temporary	Standard	Standard	Standard	Standard
MILEAGE ESTIMATES (mpg city/highway/combined) <sup>37</sup>				
	48/43/46	48/43/46	48/43/46	48/43/46
OPTIONS/PACKAGES				
Power tilt/slide moonroof with sliding sunshade (removes black roof rail accent)	NA	NA	Optional	NA
Upgraded Wheel Package — includes 16-in. 8-spoke alloy wheels with P195/50R16 tires	NA	NA	NA	Optional

WARRANTIES

Every Toyota Car, Truck and SUV is built to exceptional standards. And that's not idle boasting. We back it up with these Limited Warranty Coverages:

**Basic:** 36 months/36,000 miles (all components other than normal wear and maintenance items).

**Hybrid-Related Component Coverage:** Hybrid-related components, including the HV battery, battery control module, hybrid control module and inverter with converter, are covered for 8 years/100,000 miles. The HV battery may have longer coverage under emissions warranty. Refer to applicable *Warranty and Maintenance Guide* for details.

**Powertrain:** 60 months/60,000 miles (engine, transmission/transaxle, drive system, seatbelts and airbags).

**Rust-Through:** 60 months/unlimited miles (corrosion perforation of sheet metal).

**Emissions:** Coverages vary under Federal and California regulations. Refer to applicable *Warranty and Maintenance Guide* for details.

**Accessories:** For Genuine Toyota Accessories purchased at the time of the new vehicle purchase, the Toyota Accessory Warranty coverage is in effect for 36 months/36,000 miles from the vehicle's in-service date, which is the same coverage as the Toyota New Vehicle Limited Warranty.

For Genuine Toyota Accessories purchased after the new vehicle purchase the coverage is 12 months, regardless of mileage, from the date the accessory was installed on the vehicle, or the remainder of any applicable new vehicle warranty, whichever provides greater coverage.

You may be eligible for transportation assistance if it's necessary that your vehicle be kept overnight for repairs covered under warranty. Please see your authorized Toyota dealership for further details.

For complete details about Toyota's warranties, please visit [www.toyota.com](http://www.toyota.com), refer to the applicable *Warranty and Maintenance Guide* or see your Toyota dealer.



For Toyota Mobility program details, go to [www.toyota.com/mobility](http://www.toyota.com/mobility) or call the Toyota Customer Assistance Center at 1-800-331-4331

## CARS BUILT FOR THE WAY YOU LIVE

At Toyota, we build cars for how you live. From building advanced safety features designed to help prevent crashes to driving cross-country to understand how we can make your driving experience better, our work starts with understanding your needs. Building cars for how you live also means thinking about tomorrow — from fuel efficiency and environmental innovations, to things beyond cars, like a bicycle that you can control with your mind. And because what we learn building cars can help improve lives in other places, we do things like help communities rebuild their homes quickly after a disaster and work with soup kitchens to help them serve more people faster. Toyota. Built for how you live. Together we are going places.

## DISCLOSURES

1. Toyota strives to build vehicles to match customer interest and thus they typically are built with popular options and option packages. Not all options/packages are available separately and some may not be available in all regions of the country. If you would prefer a vehicle with no or different options, contact your dealer to check for current availability or the possibility of placing a special order. 2. Entune™ is a trademark of Toyota Motor Corporation. Always drive safely, obey traffic laws and focus on the road while driving. Services vary by phone/carrier. Functionality depends on many factors. Services subject to change. For enrollment and more details, see [toyota.com/entune](http://toyota.com/entune). 3. May not be compatible with all mobile phones, MP3/WMA players and like models. 4. iPod® and iPhone® are registered trademarks of Apple Inc. All rights reserved. 5. Advanced voice recognition capabilities vary by head unit. 6. The Bluetooth® word mark and logos are registered trademarks owned by Bluetooth SIG, Inc., and any use of such marks by Toyota is under license. A compatible Bluetooth®-enabled phone must first be paired. Phone performance depends on software, coverage and carrier. 7. Apps/services vary by phone/carrier; functionality depends on many factors. Select apps use large amounts of data; you are responsible for charges. Apps and services subject to change. See [toyota.com/entune](http://toyota.com/entune) for details. 8. Always drive safely, obey traffic laws and focus on the road while driving. Siri® is available on select iPhone®/iPad® models and requires Internet access. Siri® is not available in all languages or all areas and features vary by area. Some Siri® functionality and commands are not accessible in the vehicle. Data charges may apply. See [apple.com](http://apple.com) and phone carrier for details. Siri® is a registered trademark of Apple Inc. 9. Availability and accuracy of the information provided by the navigation system is dependent upon many factors. Use common sense when relying on information provided. Services and programming subject to change. Services not available in every city or roadway. Updates may be available from your dealer at an additional cost. See *Owner's Manual* for details. 10. Be sure to obey traffic regulations and maintain awareness of road and traffic conditions at all times. Apps/services vary by phone/carrier; functionality depends on many factors. Select apps use large amounts of data; you are responsible for charges. Apps and services subject to change. See [toyota.com/entune](http://toyota.com/entune) for details. 11. HD Radio™ Technology manufactured under license from iBiquity Digital Corporation U.S. and Foreign Patents. HD Radio™ and the HD, HD Radio, and "Arc" logos are proprietary trademarks of iBiquity Digital Corp. 12. SiriusXM audio services require a subscription sold separately, or as a package, by Sirius XM Radio Inc. **If you decide to continue service after your trial, the subscription plan you choose will automatically renew thereafter and you will be charged according to your chosen payment method at then-current rates. Fees and taxes apply. To cancel you must call SiriusXM at 1-866-635-2349. See SiriusXM Customer Agreement for complete terms at [www.siriusxm.com](http://www.siriusxm.com).** All fees and programming subject to change. Not all vehicles or devices are capable of receiving all services offered by SiriusXM. Current information and features may not be available in all locations, or on all receivers. ©2017 Sirius XM Radio Inc. Sirius, XM, SiriusXM and all related marks and logos are trademarks of Sirius XM Radio Inc. 13. Trial length and service availability may vary by model, model year or trim. 14. PANDORA®, the PANDORA® logo, and the Pandora trade dress are trademarks or registered trademarks of Pandora Media, Inc., used with permission. 15. The backup camera does not provide a comprehensive view of the rear area of the vehicle. You should also look around outside your vehicle and use your mirrors to confirm rearward clearance. Environmental conditions may limit effectiveness and view may become obscured. See *Owner's Manual* for additional limitations and details. 16. CAUTION! When driving a hybrid vehicle, pay special attention to the area around the vehicle. Because there is little vehicle noise in EV Mode, pedestrians, people riding bicycles or other people and vehicles in the area may not be aware of the vehicle starting off or approaching them, so take extra care while driving. EV Mode works under certain conditions at low speeds for up to one-half mile. See *Owner's Manual* for details. 17. The Smart Key System may interfere with some pacemakers or cardiac defibrillators. If you have one of these medical devices, please talk to your doctor to see if you should deactivate this system. 18. Vehicle Stability Control is an electronic system designed to help the driver maintain vehicle control under adverse conditions. It is not a substitute for safe and attentive driving practices. Factors including speed, road conditions, weather and driver steering input can all affect whether VSC will be effective in preventing a loss of control. See *Owner's Manual* for additional limitations and details. 19. Brake Assist is designed to help the driver take full advantage of the benefits of ABS. It is not a substitute for safe driving practices. Braking effectiveness also depends on proper vehicle maintenance, and tire and road conditions. See *Owner's Manual* for additional limitations and details. 20. Smart Stop Technology® operates only in the event of certain contemporaneous brake and accelerator pedal applications. When engaged, the system will reduce power to help the brakes bring the vehicle to a stop. Factors including speed, road conditions and driver input can all impact stopping distance. Smart Stop Technology® is not a substitute for safe and attentive driving and does not guarantee instant stopping. See *Owner's Manual* for details. 21. Drivers are responsible for their own safe driving. Always pay attention to your surroundings and drive safely. System effectiveness is dependent on many factors including road, weather and vehicle conditions. See *Owner's Manual* for additional limitations and details. 22. The TSS Pre-Collision System is designed to help avoid or reduce the crash speed and damage in certain frontal collisions only. It is not a substitute for safe and attentive driving. System effectiveness is dependent on many factors including road, weather and vehicle conditions. See *Owner's Manual* for additional limitations and details. 23. Lane Departure Alert is designed to read visible lane markers under certain conditions, and provide visual and audible alerts when lane departure is detected. It is not a collision-avoidance system or a substitute for safe and attentive driving. Effectiveness is dependent on many factors including road, weather and vehicle conditions. See *Owner's Manual* for additional limitations and details. 24. Automatic High Beams operate at speeds above 25 mph. Factors such as a dirty windshield, weather, lighting and terrain limit effectiveness, requiring the driver to manually operate the high beams. See *Owner's Manual* for additional limitations and details. 25. All the airbag systems are Supplemental Restraint Systems. All airbags (if installed) are designed to inflate only under certain conditions and in certain types of severe collisions. To decrease the risk of injury from an inflating airbag, always wear seatbelts and sit upright in the middle of the seat as far back as possible. Do not put objects in front of an airbag or around the seatback. Do not use a rearward-facing child seat in any front passenger seat. See *Owner's Manual* for additional limitations and details. 26. Whiplash-Injury-Lessening front seats can help reduce the severity of whiplash injury in certain rear-end collisions. 27. The Toyota Tire Pressure Monitor alerts the driver when tire pressure is critically low. For optimal tire wear and performance, tire pressure should be checked regularly with a gauge; do not rely solely on the monitor system. See *Owner's Manual* for details. 28. This device is not a substitute for safe and attentive driving practices. It is the driver's responsibility to maintain a lookout for pedestrians, cyclists, other cars and objects, and to drive the vehicle in a safe and attentive manner to avoid making contact. 29. Hill Start Assist Control is designed to help minimize backward rolling on steep ascents. It is not a substitute for safe driving judgment and practices. Factors including speed, grade, surface conditions and driver input can all affect whether HAC will be effective in preventing a loss of control. See *Owner's Manual* for additional limitations and details. 30. The engine immobilizer is a state-of-the-art anti-theft system. When you insert your key into the ignition switch or bring a Smart Key fob into the vehicle, the key transmits an electronic code to the vehicle. The engine will only start if the code in the transponder chip inside the key/fob matches the code in the vehicle's immobilizer. Because the transponder chip is embedded in the key/fob, it can be costly to replace. If you lose a key or fob, your Toyota dealer can help. Alternatively, you can find a qualified independent locksmith to perform high-security key services by consulting your local Yellow Pages or by contacting [www.aloa.org](http://www.aloa.org). 31. Covers normal factory scheduled service for 2 years or 25K miles, whichever comes first. See Toyota dealer for details and exclusions. Valid only in the continental U.S. and Alaska. 32. Does not include parts and fluids, except emergency fuel delivery. Valid only in the continental U.S. and Alaska. 33. Meets Tier 2/Bin 3 Federal emissions standard. 34. Hybrid vehicle battery expected life is 150,000 miles based on laboratory bench testing. 35. When equipped with optional 16-in. 8-spoke alloy wheels with P195/50R16 tires. 36. Cargo and load capacity limited by weight and distribution. 37. 2018 EPA-estimated mileage. Actual mileage will vary. 38. Extra-cost color. 39. This floor mat was designed specifically for use in your model and model year vehicle and SHOULD NOT be used in any other vehicle. To avoid potential interference with pedal operation, each mat must be secured with its fasteners. Do not install a floor mat on top of an existing floor mat. 40. The Toyota Genuine Accessory Warranty will only apply when the installation is performed by a trained Toyota-approved installer. Please see dealer for details.

Toyota strives to build vehicles to match customer interest and thus they typically are built with popular options and option packages. Not all options/packages are available separately and some may not be available in all regions of the country. See [toyota.com](http://toyota.com) for information about options/packages commonly available in your area. If you would prefer a vehicle without any or with different options, contact your dealer to check for current availability or the possibility of placing a special order.

Some vehicles are shown with available equipment. Seatbelts should be worn at all times. For details on vehicle specifications, standard features and available equipment in your area, contact your Toyota dealer. A vehicle with particular equipment may not be available at the dealership. Ask your Toyota dealer to help locate a specifically equipped vehicle.

All information presented herein is based on data available at the time of posting, is subject to change without notice and pertains specifically to mainland U.S.A. vehicles only. Prototypes shown. Actual production vehicles will vary.